

direction of the arrows there seems to have been some lingering ice wh. flowed downwards eroding shallow groove channels in the direction of steepest declivity & even before the total recession of the main gl. there would probably be a wing shaped ice slope leading to the shadowed part with a slow action eroded the upper portion of the dome. All of the rocks forming the south walls of deep Yosemite canyons & the lower part of the valley.



mass we have all of the principal forms of some peaks with the various conditions of cleavage planes necessary to their production. At the summit we have the vert. planes wh. gave rise to the face AB cut by the curved flakes wh. gave rise to the dome outline Bb. From A downwards we have the sloping zig wh. gave rise to the face. C & D we

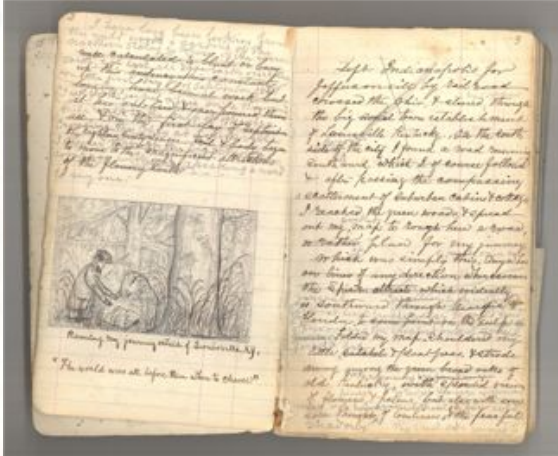
# Connecting the Digital to the Terrestrial: Historic Drawings of Yosemite

Mike Wurtz  
University Libraries' Special Collections and Archives  
University of the Pacific - Stockton - California



face. From A to B the height is marked 1800 feet. The lower slopes to the perhaps rocks forming a portion of the face. Along the base of the are situated & all wh. have been

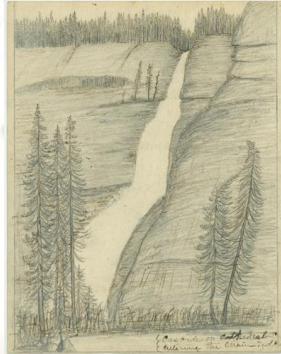
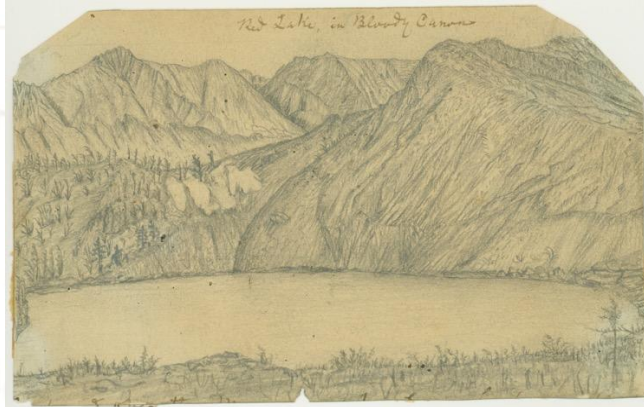
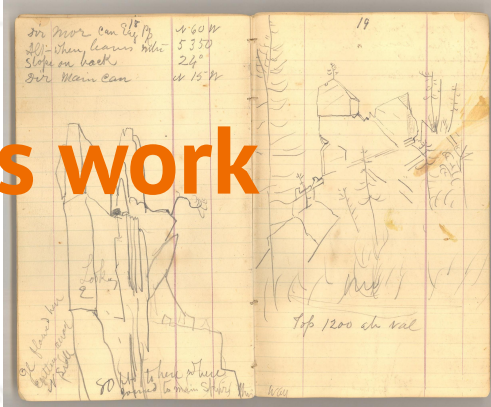
# John Muir (1838-1914)



- 103 journals and notebooks
- ~7000 correspondence
- 100s of manuscript drafts
- 100s of drawings
- 1000s of photographs



# Sharing Muir's work



# ContentDM and then BePress

UNIVERSITY OF THE  
PACIFIC

University  
Libraries

Scholarly Commons

HOMEABOUTFAQMY ACCOUNT

SEARCH

Enter search terms:

in this collection

Advanced Search

Notify me via email or [RSS](#)

BROWSE

Collections

Disciplines

Authors

AUTHOR CORNER

Author FAQ

LINKS

Holt-Atherton Special Collections

SCHOLARLY COMMONS ISSN:  
2 5 7 2 - 6 8 0 3


Home > [University Libraries](#) > [HASC - Digital Archives](#) > [John Muir Papers](#) > [John Muir Journals](#) > [July 1867-February 1868 \[Journal 01\]](#)

JULY 1867-FEBRUARY 1868 [JOURNAL 01]: THE  
"THOUSAND MILE WALK" FROM KENTUCKY TO  
FLORIDA AND CUBA

The unpublished works of John Muir are under copyright by the Muir-Hanna Trust. To purchase copies and/or obtain permission to publish or exhibit items from the John Muir Papers, [visit our fees and forms page](#).

To view additional journals by John Muir, [click here to view the top level of the collection](#).

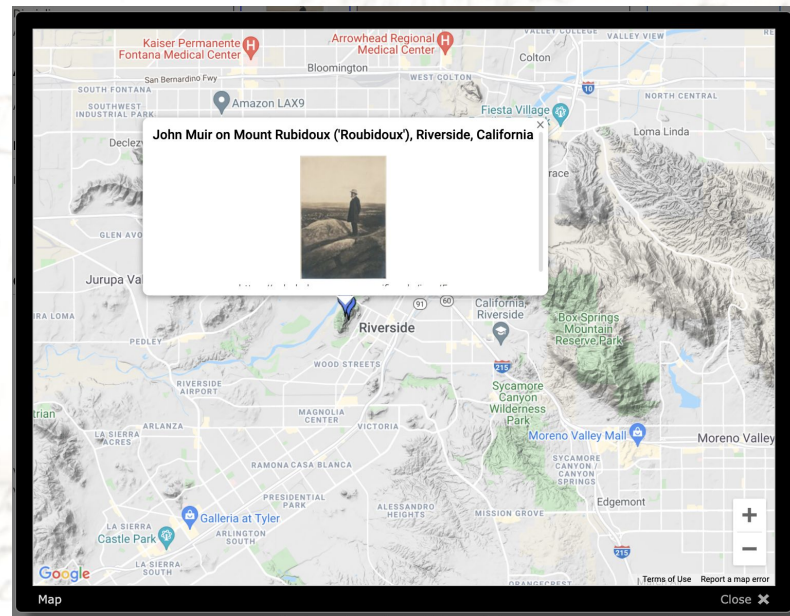
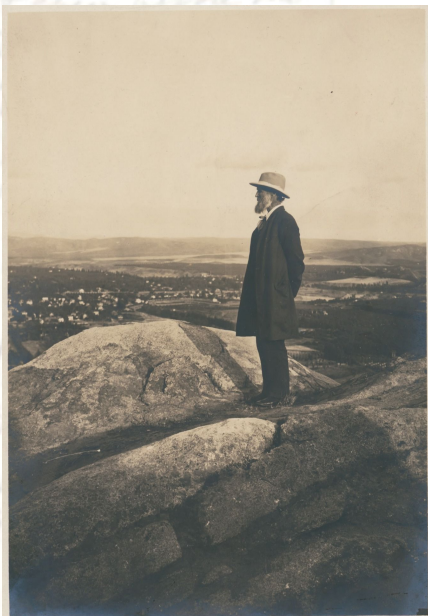
To view additional materials on or by John Muir held by the Holt-Atherton Special Collections of the University of the Pacific, [click here to view the entire collection](#).



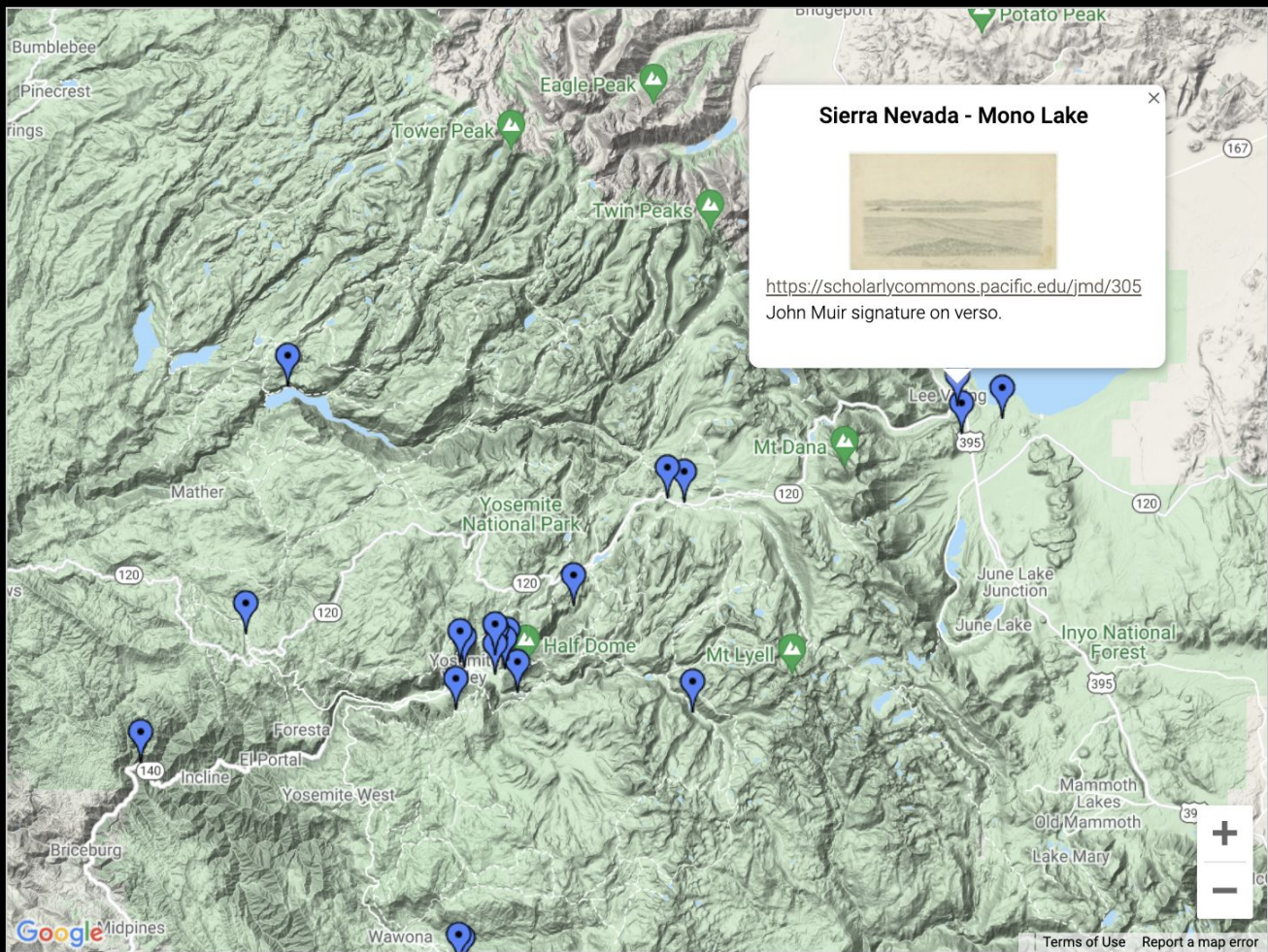
Page 4 of 15



# Geolocating



Mt Rubidoux (Riverside) Muir 1907 Wurtz 2009



### Sierra Nevada - Mono Lake



<https://scholarlycommons.pacific.edu/jmd/305>  
John Muir signature on verso.

Google  
Midpines

Map

Terms of Use Report a map error

Close X



# Field Trips: Inspiration

- Eastern Sierra
- Crater Lake
- Death Valley
- Southern Utah and Northern Arizona
- Scotland
- High Sierra
- Mono Lake
- Of course, Yosemite Valley



# Storytelling in the field



Chandler, Apr. 1873  
v. 10.

1873], April A GEOLOGIST'S WINTER WALK.

355

A GEOLOGIST'S WINTER WALK.\*

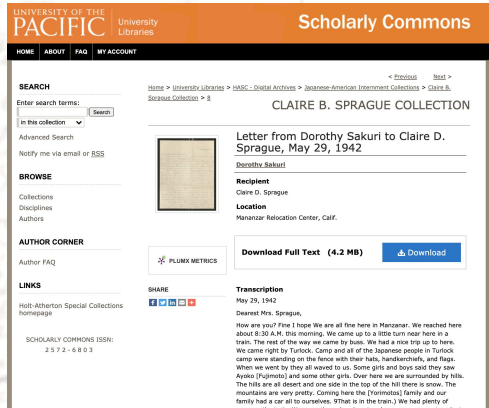
AFTER reaching Turlock, I sped  
afloat over the stubble-fields, and  
through miles of brown *Hemizonia* and  
purple *Erigeron*, to Hopeton, conscious  
of little more than that the town was  
behind and beneath me, and the mount-

The morning after this decision, I  
started up the Cañon of Tenaya, caring  
little about the quantity of bread I car-  
ried; for, I thought, a fast and a storm  
and a difficult cañon are just the medi-  
cine I require. When I passed Mirror

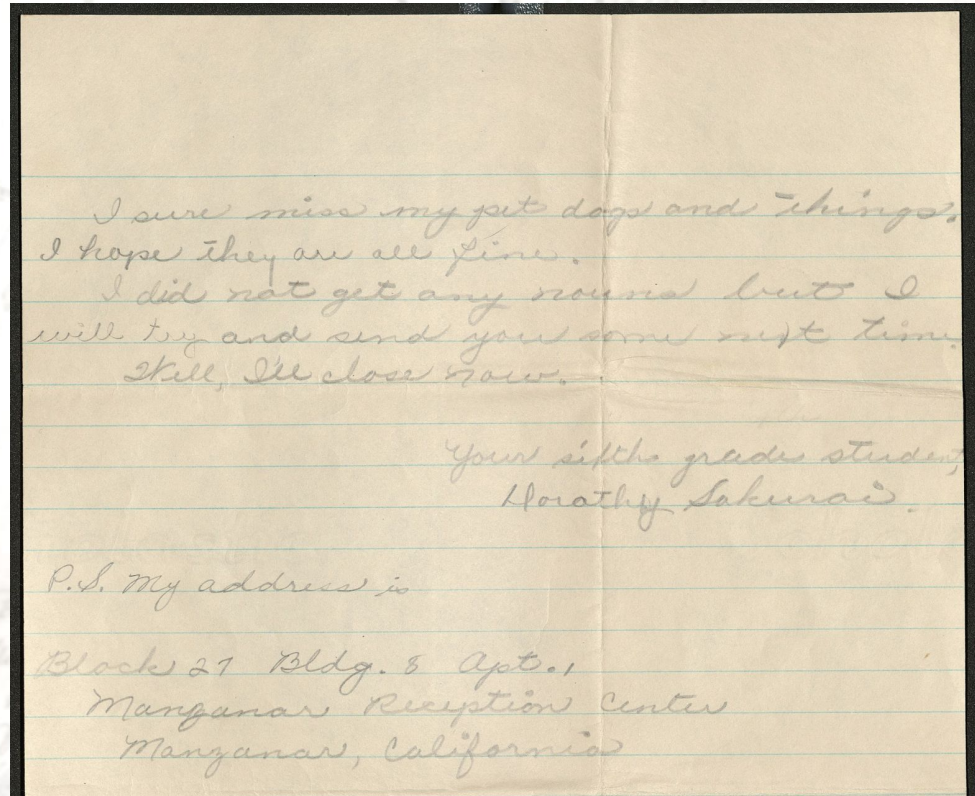
DC  
ge



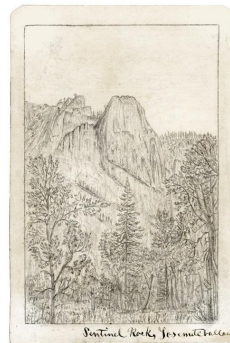
# Japanese American Internment



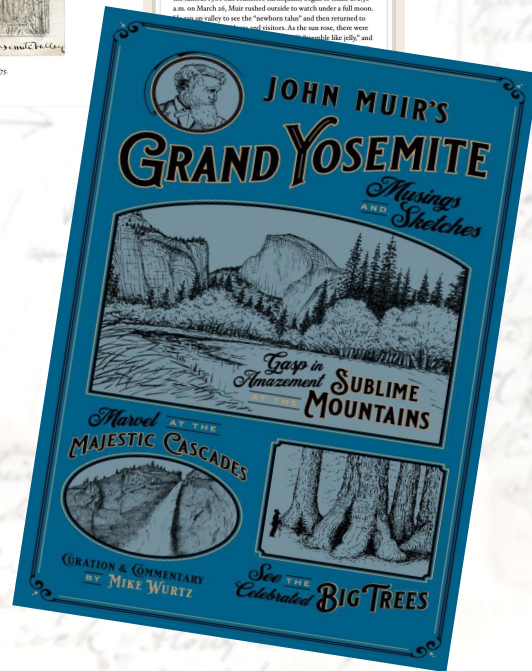
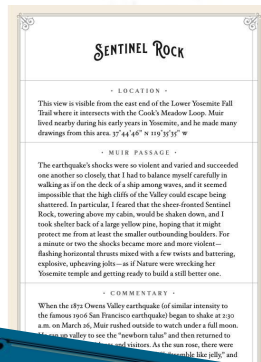
“The houses are very good. We had a little stove in ours. I think there is a little stove in every house. The stove is to keep warm. I sure miss my pet dogs and things. I hope they are all fine. I did not get any [nouns] but I will try and send you some next time. Well, I’ll close now.”



# Finally a book



"Sentinel Rock, Yosemite Valley" ca. 1875





# Making observers

- I Notice...
- I Wonder...
- It Remind Me of...

JOHN MUIR LAWS  
NATURE STEWARDSHIP THROUGH  
SCIENCE, EDUCATION, AND ART



ATTENTION · CURIOSITY · WONDER



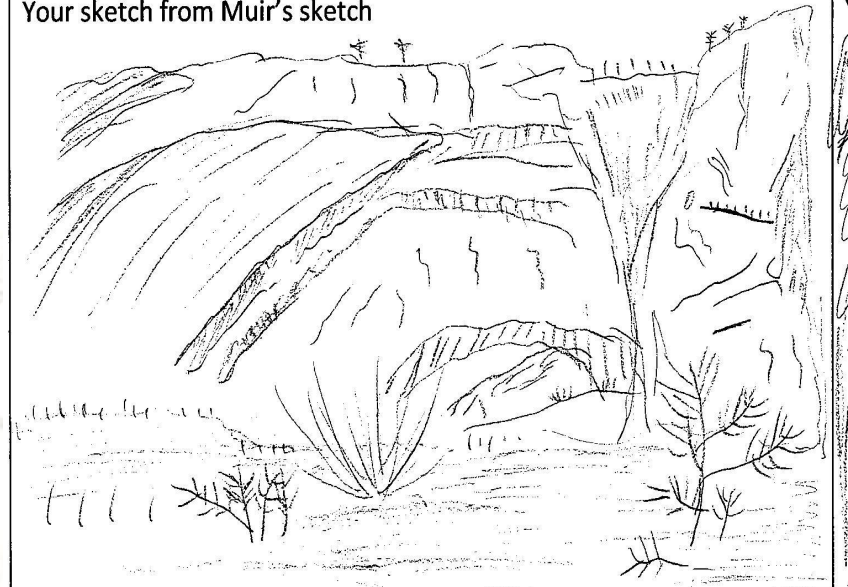
## Three prompts for deeper nature observation

Imagine you are seeing a bird for the first time. The novelty of the experience helps us concentrate and focus more carefully than the familiar House Sparrows that are always in your garden. Now imagine how hard you might look if you knew you were seeing something for the last time. How can you bring that focus to every observation that can be employed in your own nature observations or with students? Telling yourself or your students to “look carefully” or “look hard” is not very helpful. The human brain quickly clears itself of any details that are not necessary for survival. This is useful because it frees up working memory for new things. You will

# Pre-trip preparation – Scholarly Commons



Your sketch from Muir's sketch

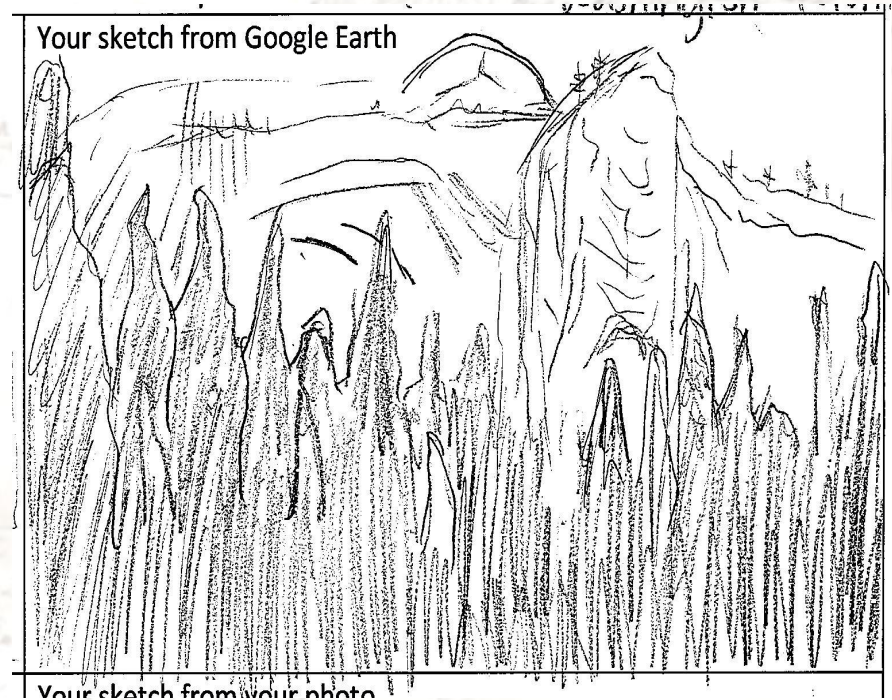


Your sketch on site

Half Dome, facing from N to E the height is nearly 1000 feet from N to the foot of rock at Mamie Lake about 2000. The upper portion is very near vertical. The lower slopes to the lake at an angle of 37°. There are sharp roof-shaped spires forming a portion of the Half Dome rock. Along the base of the rock from N to E are many small, sharp, pointed rocks.



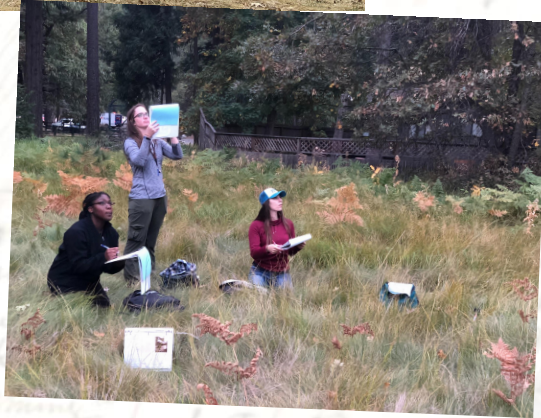
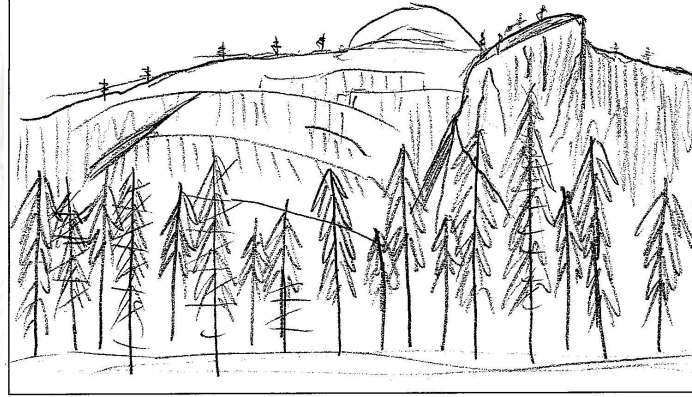
# Pre-trip preparations – Google Earth (VR)



# On-site - observation



Your sketch on site



	FROM YOUR SKETCHING	FROM GOOGLE EARTH	ON SITE
I notice...	<ul style="list-style-type: none"> <li>• high elevation</li> <li>• trees / bushes</li> <li>• mountain</li> <li>• angular</li> </ul>	<ul style="list-style-type: none"> <li>• alot more trees</li> <li>• there is a additional dome (north dome)</li> </ul>	<p>The colors, white, gray, tan</p> <p>The trees, how dense they are</p>
I wonder...	<ul style="list-style-type: none"> <li>• why he drew this</li> <li>• why the shape of the mountain is different</li> <li>• what was the weather like</li> </ul>	<ul style="list-style-type: none"> <li>• why he didn't draw the dome</li> <li>• why the landscape (vegetation) changed.</li> </ul>	<p>how the 'slashes' were created</p> <p>how the slashes in the dome was created</p>
It reminds me of...	<ul style="list-style-type: none"> <li>• A dessert</li> <li>• valley</li> </ul>	<ul style="list-style-type: none"> <li>• of a forest</li> </ul>	<p>rocky mountain ice cream</p>

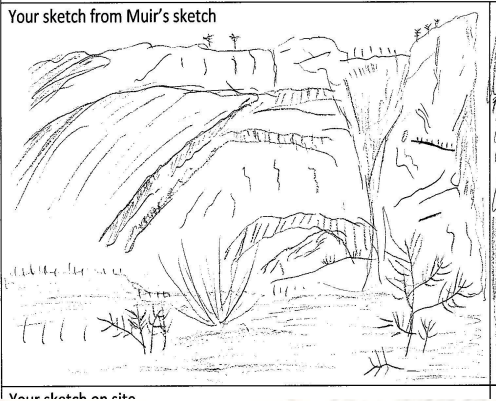




"Untitled" (Royal Arches and Washington Column), ca. 1873

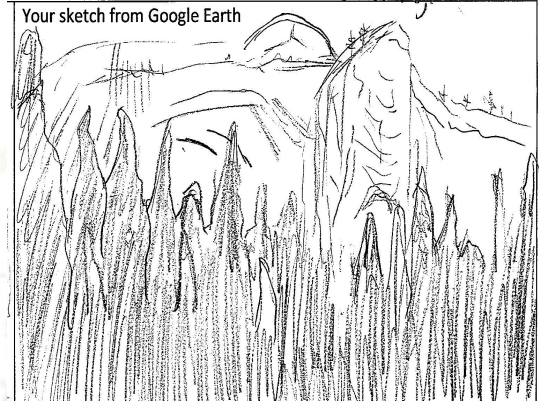


Your sketch from Muir's sketch



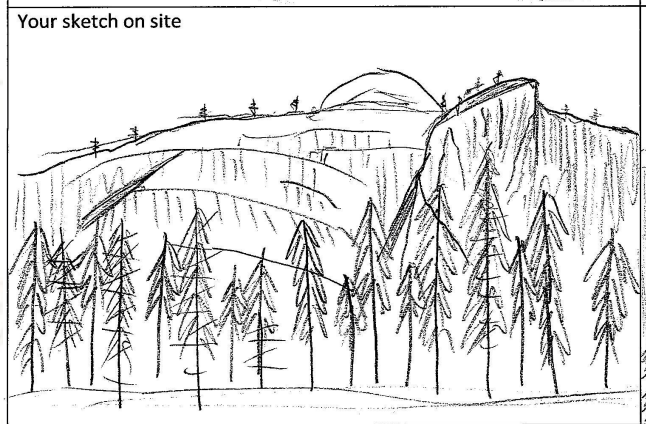
Your sketch on site

Your sketch from Google Earth

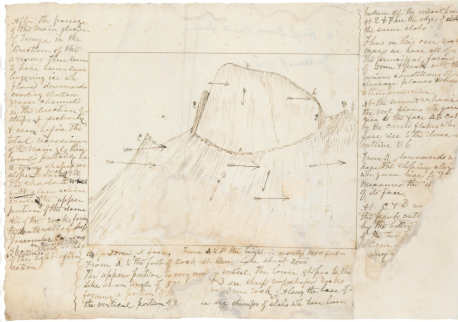


Your sketch from your photo

Your sketch on site



# Student reports/evaluations



I love sketching at the spots where Muir once did the same thing. I can compare what I saw to what Muir observed in the past. I get to know different person's perspective and how the landscape changed during those years. I'd want to get into the habit of sketching when I want to record something.



# Motivations and Takeaways

## ● Motivations

- Bring Muir's work back to the field
- Develop interest and knowledge for Sense of Place
- Enhance Observations
- Use our online resources

## ● Takeaways

- increased use of archival materials

