

# Overview

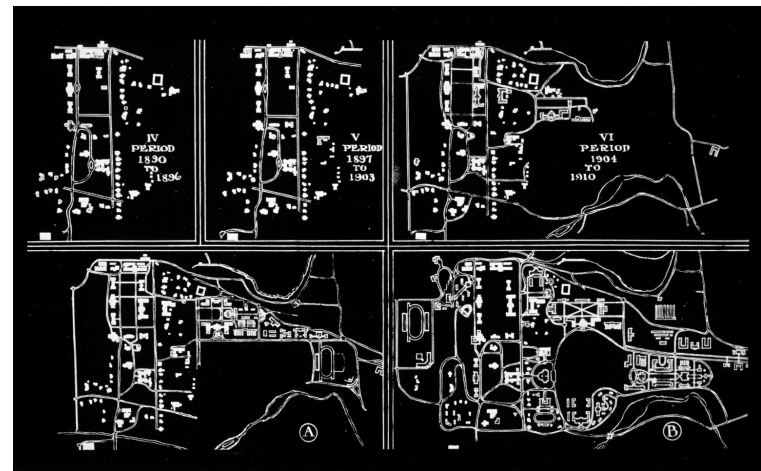
---

## Liz Muller

Transitions during past year  
Existing and new services

## Kaila Bussert

Public interfaces to image resources  
Looking ahead



# Background

Knight Visual Resources Facility



**March 2009** College of Art, Architecture & Planning announced closure of facility

**May 2009** Visual resources facility closed

Cornell University Library



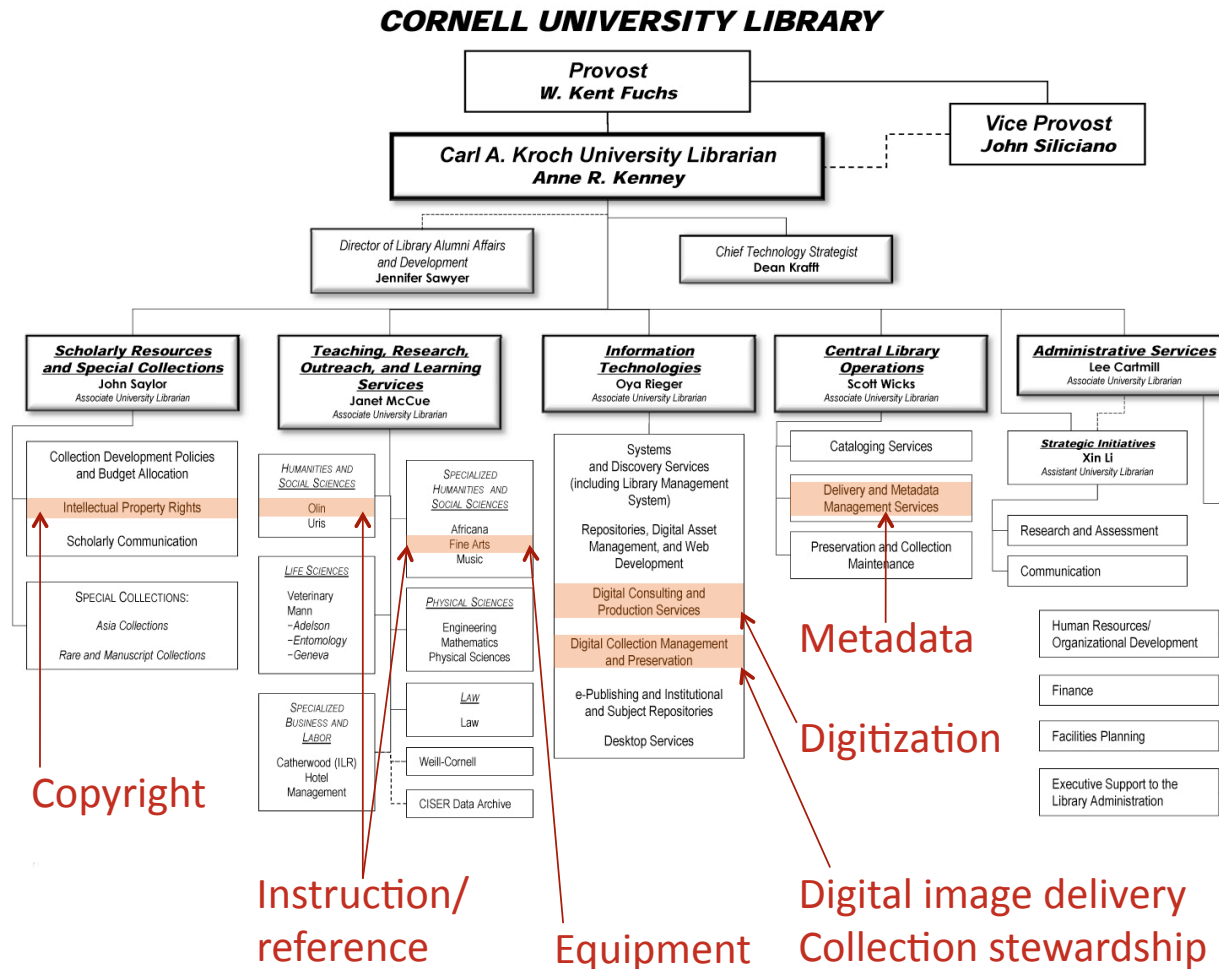
**March 2009** Cornell University Library began planning

**June 2009** Library increased image-related services

# Image-related services

- **Collection stewardship**
  - Recontextualization of collection, comprises 16% of images in Luna
- **Digital image delivery**
  - Assumed responsibility for ARTstor uploads
- **Digitization**
  - Adjusted scanning methods – images, not artifacts
- **Metadata creation**
  - Assumed responsibility for PiCtor database – production, 0.5 FTE
- **Instruction and faculty support**
  - Advanced courses offered, more outreach
- **Equipment lending**
  - Equipment cage added to Fine Arts Library, very high use
- **Copyright consultation**

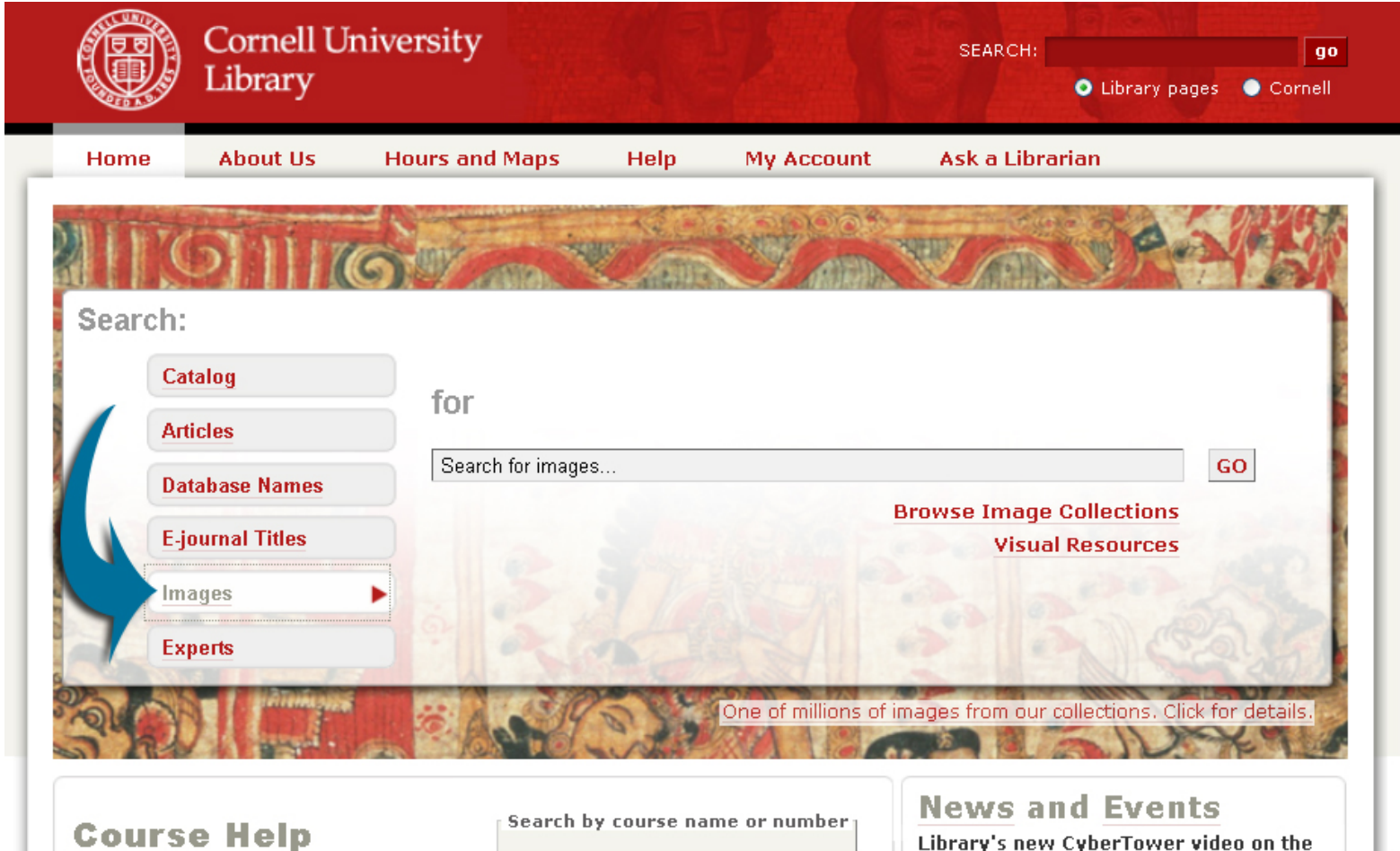
# Distribution of services



# Visual Resources Working Group

- Mira Basara Digital Media Group
- Eleanor Brown Rare & Manuscript Collections
- Kaila Bussert, co-chair Research & Learning Services
- Matt Conway Herbert F. Johnson Museum of Art
- Terry Kristensen Veterinary Library
- Danielle Mericle, co-chair Digital Media Group
- Boris Michev Maps & Geospatial Information Collection
- Barb Morley Kheel Labor Archives
- Liz Muller Metadata Services
- Susette Newberry Research & Learning Services
- Maaïke Oldemans Fine Arts Library
- Martha Walker Fine Arts Library
- Glen Wiley Metadata Services
- Co-Sponsors
  - Janet McCue AUL for Teaching, Research, Outreach & Learning Services
  - Oya Rieger AUL for Information Technologies

# Location, location, location...



The screenshot shows the Cornell University Library website. The header is red with the Cornell University Library logo and name. A search bar is in the top right. Below the header is a navigation bar with links: Home, About Us, Hours and Maps, Help, My Account, and Ask a Librarian. The main content area features a large banner with a colorful, abstract pattern. On the left, a search box is labeled 'Search:' and contains a list of search categories: Catalog, Articles, Database Names, E-journal Titles, Images, and Experts. A blue arrow points to the 'Images' button. To the right of the search box is a search bar labeled 'for' and a 'GO' button. Below the search box, there are links for 'Browse Image Collections' and 'Visual Resources'. At the bottom, there are sections for 'Course Help' and 'News and Events'.

Cornell University Library

SEARCH:

☒ Library pages ☐ Cornell

[Home](#) [About Us](#) [Hours and Maps](#) [Help](#) [My Account](#) [Ask a Librarian](#)

Search:

[Catalog](#) [Articles](#) [Database Names](#) [E-journal Titles](#) [Images](#) [Experts](#)

for

[Browse Image Collections](#)  
[Visual Resources](#)

One of millions of images from our collections. Click for details.

**Course Help**

**News and Events**  
Library's new **CyberTower** video on the



# WebFeat federated search

Search within selected databases below

Keyword

And  Keyword

And  Keyword

Basic Search

Go Clear

Select/Deselect All Databases			
<input type="checkbox"/>	American Journeys	images	description
<input checked="" type="checkbox"/>	American memory	images	description
<input type="checkbox"/>	Ancient art and architecture (Saskia)	images (direct access only)	description
<input type="checkbox"/>	Andrew D. White architectural photographs collection	images (direct access only)	description
<input checked="" type="checkbox"/>	AP images	images	description
<input type="checkbox"/>	Artefacts Canada	images	description
<input checked="" type="checkbox"/>	Artstor	images	description
<input type="checkbox"/>	Asian American drama	images	description
<input type="checkbox"/>	BCR's collaborative digitization program	images	description
<input type="checkbox"/>	Beautiful birds (Hill Ornithology Collection, Cornell University Library)	images	description
<input type="checkbox"/>	Beyond the Taj	images (direct access only)	description
<input type="checkbox"/>	Billie Jean Isbell Andean collection	images (direct access only)	description
<input type="checkbox"/>	Black drama, 1850 to present	images	description
<input type="checkbox"/>	Breeds of livestock	images (direct access only)	description
<input type="checkbox"/>	Catena digital archive of historic gardens and landscapes	images	description
<input type="checkbox"/>	Claire Holt papers, 1930-1969	images (direct access only)	description
<input type="checkbox"/>	Cornell University collection of political Americana	images (direct access only)	description
<input type="checkbox"/>	Cuban heritage digital collection	images	description

# WebFeat search results

**Artstor**

Results 1 to 100 of 300

☐ Select or Deselect all

1.



☐ **USA, Utah. 1995. Arches National Park near Moab. ©Thomas Hoepker/Magnum Photos.**

Author: Thomas Hoepker

Description: Identifier:

AMAGNUMIG\_10311536238

[View](#)

2.



☐ **National Museum of Roman Art**

Author: Jos&#xE9; Rafael Moneo

Description: Identifier:

ATEXASIG\_WANG\_10311780126

[View](#)

3.



☐ **Baoli: View of arches of adjoining structure**

Description: Identifier:

APATELIG\_10312305856

[View](#)



# Visual resources web site


The screenshot shows the Cornell University Library Visual Resources web site. The header is red with the Cornell University Library logo and name on the left, a search bar with a 'go' button in the center, and radio buttons for 'Library pages' and 'Cornell' on the right. Below the header is a navigation bar with links: Home, About Us, Hours and Maps, Help, My Account, and Ask a Librarian. The main content area features a large banner with a grayscale image of a classical painting and the text 'Visual Resources'. To the right of the banner is a sidebar with links: Course Help, Research Help, Library Services, Requests, and Search. Below the banner is a 'Home' link and a 'Research Tools' section. The 'Research Tools' section has a sidebar with links: Research Tools, Research Support, Digitization, Equipment & Software, Copyright, and FAQ. The main text in the 'Research Tools' section describes the library's access to image databases and provides contact information for a visual resource specialist. At the bottom are three red buttons with white text and right-pointing arrows: ARTstor, Luna Insight, and Additional Image Resources.

 **Cornell University Library**

SEARCH:  **go**

☒ Library pages ☐ Cornell

[Home](#) [About Us](#) [Hours and Maps](#) [Help](#) [My Account](#) [Ask a Librarian](#)

 **Visual Resources**

[Course Help](#)  
[Research Help](#)  
[Library Services](#)  
[Requests](#)  
[Search](#)

[Home](#)

## Research Tools

[Research Tools](#)  
[Research Support](#)  
[Digitization](#)  
[Equipment & Software](#)  
[Copyright](#)  
[FAQ](#)

Cornell University Library provides access to many image databases. Several of those databases offer expanded features through separate software applications or special, password-protected accounts. ARTstor and collections delivered via Luna Insight® offer expanded image-sharing features (including presentation options), which Cornell community members may access or download.


To request a consultation with a trained visual resource specialist, write [vrhelp-l@cornell.edu](mailto:vrhelp-l@cornell.edu)

**ARTstor** ▶

**Luna Insight** ▶

**Additional Image Resources** ▶

# Instruction and research support



## Visual Resources

[Requests](#)  
[Search](#)

[Home](#)

### Research Support

- [Research Tools](#)
- [Research Support](#)
- [Digitization](#)
- [Equipment & Software](#)
- [Copyright](#)
- [FAQ](#)

Cornell University Library offers a number of online and in-person instruction services for users of digital images, from hands-on workshops and electronic guides to customized consultation sessions. For information about image repositories on campus, please see [Research Tools](#).

Workshops

▶

Online Guides

▶

Customized Consultations

▼

Cornell University Library  
[vrhelp-l@cornell.edu](mailto:vrhelp-l@cornell.edu)

Schedule a one-on-one consultation with a trained visual resource specialist, who will provide guidance in using ARTstor, Luna, or in obtaining high-quality digital images.

# Online guides

**Cornell University  
Library Guides**

Library Guides Home   Search Cornell

Library Home » Cornell University Library Guides Home » Digital Images for Research and Teaching Admin Sign In

## Digital Images for Research and Teaching

Tags: [image\\_searching](#) [images](#) [visual\\_resources](#)

Last update: Jan 06th, 2010   URL: <http://guides.library.cornell.edu/imageresearch>   [Print Guide](#)   [RSS Updates](#)   [SHARE](#)   

[Home](#)   [Open Web](#)   [Licensed databases](#)   [ARTstor](#) ▾   [Luna Insight 6.0](#) ▾   [Copyright](#)   [Image Help](#)

[Home](#)   [Comments \(0\)](#)   [Print Page](#)      [Guides](#) ▾   [Go](#)

 **Other Guides**

Looking for more images? Try our "[Finding Images](#)" guide.

Interested in finding images in non-image databases? Try our "[Unexpected Images](#)" guide.


[Comments \(0\)](#)

 **Welcome to Digital Images for Research and Teaching**

Interested in finding digital images for research and teaching? This guide (designed to accompany the Digital Images Research workshop) will lead you through the process of identifying image collections and searching for images in licensed and Cornell-built image collections including ARTstor & Luna. We will also survey image search engines, image presentation basics, image sharing opportunities, and discuss how to properly use and credit copyrighted images in your research projects.



# Building interdisciplinary collections

**Cornell University Library**

Welcome Cornell2 | Login

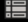
**All Collections**

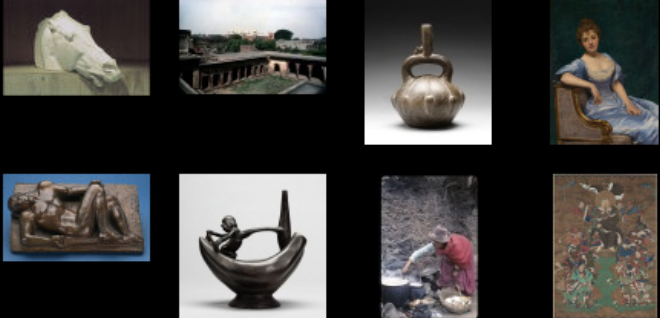
Search **LUNA**  
  
Advanced Search

◀ ▶ Collections Explore Create Share This Help

**Browse Selected Collections**

**Collection Selection**

-  **All Collections (273,867)**
- Cornell University Collections
  - NYS Aerial Photographs
  - Willard Straight
  - Cornell Lab of Ornithology Art Collection
  - Cornell Vicos
  - Rare and Manuscript Collections Images
  - Inscriptions of Eleusis
  - Billie Jean Isbell Andean Collection
  - Beyond the Taj
  - Knight Visual Resources Collection
  - Herbert F. Johnson Museum of Art
  - Howell Icelandic Collection
  - A. D. White Architectural Photographs
  - Claire Holt Indonesian Art Collection
  - Reuleaux Kinematic Mechanisms Collection
  - Saskia Ancient Art and Architecture
  - Utopia Collection of Renaissance Art
  - Cornell University Political Americana...
  - Scholars Resource Collection

**Featured Media****Category Pages****Browse All**

Cornell University offers a range of digital collections that showcase visual resources from its rich cultural collections. Original materials include fine art, archival photographs, ephemera, images in rare books, and other original works from its library collections, the Herbert F. Johnson Museum of Art, as well as visual resources and original pictorial field work for the study of art, architecture, anthropology, and classics. Subject areas are diverse and include ornithology, western architecture, Renaissance studies, U.S. presidential elections, and geographically-specific studies, including Iceland, Indonesia, Korea, and Peru.

In order to view the Knight Visual Resources Collection, Scholars Resource Collection, Ancient Art and Architecture (Saskia), and Utopia Collection, you must log in at top right. To obtain a password, email [cul-imagepassword-l@cornell.edu](mailto:cul-imagepassword-l@cornell.edu) and include "Insight Password Request" in the subject heading.

## Future directions

- Faculty grants for digital collection-building in the College of Arts & Sciences
- Participation in ARTstor Shared Shelf Initiative
- Collections in Flickr
- Multimedia collections

PHEW!

Questions?

Liz Muller

- [edm29@cornell.edu](mailto:edm29@cornell.edu)

Kaila Bussert

- [kjb82@cornell.edu](mailto:kjb82@cornell.edu)

