



**Northern Illinois  
University**

*Your Future. Our Focus.*

# Promoting EDI: Targeted Funding for Collaborative Projects

ACRL TSIG Annual Meeting  
June 29, 2023

Gwen Gregory, Kimberly Shotick, and Hao Phan

# Northern Illinois University Libraries



- 15,000 students: 11,000 undergrad, 4,000 grad
  - 20% Latinx, 17% Black, 6% Asian
- 3,000 faculty and staff
- 2 million physical volumes
- 54 library staff
- \$3,000,000 materials budget
  - 90% on continuing resources
- Library Equity, Diversity and Inclusion Committee

# Our Project



- Diversity audit of journalism collection
- LEDI Committee: extra funding to improve collection diversity, equity, and inclusion
  - Librarians know their areas and what is needed
  - Created proposal, advocated with administration

# Application Information



- Title of project:
- Goals of project:
- For a diversity audit, what call number area will you be reviewing? What method(s) will you use for evaluation of current holdings?
- If not a diversity audit, please describe the method(s) you will use:
- Criteria to be used for selecting new materials to purchase:
- Who will work on this project?
- Dollar amount requested:

# Process



- Applications reviewed and approved by library administration
- All applications approved in FY23
- Ordering
  - Use regular order process and vendors
  - All ordered at one time; separate list also required
  - Single fund/reporting code for all
  - Project noted on orders

# Project Example: Student Success and Well-Being Collection

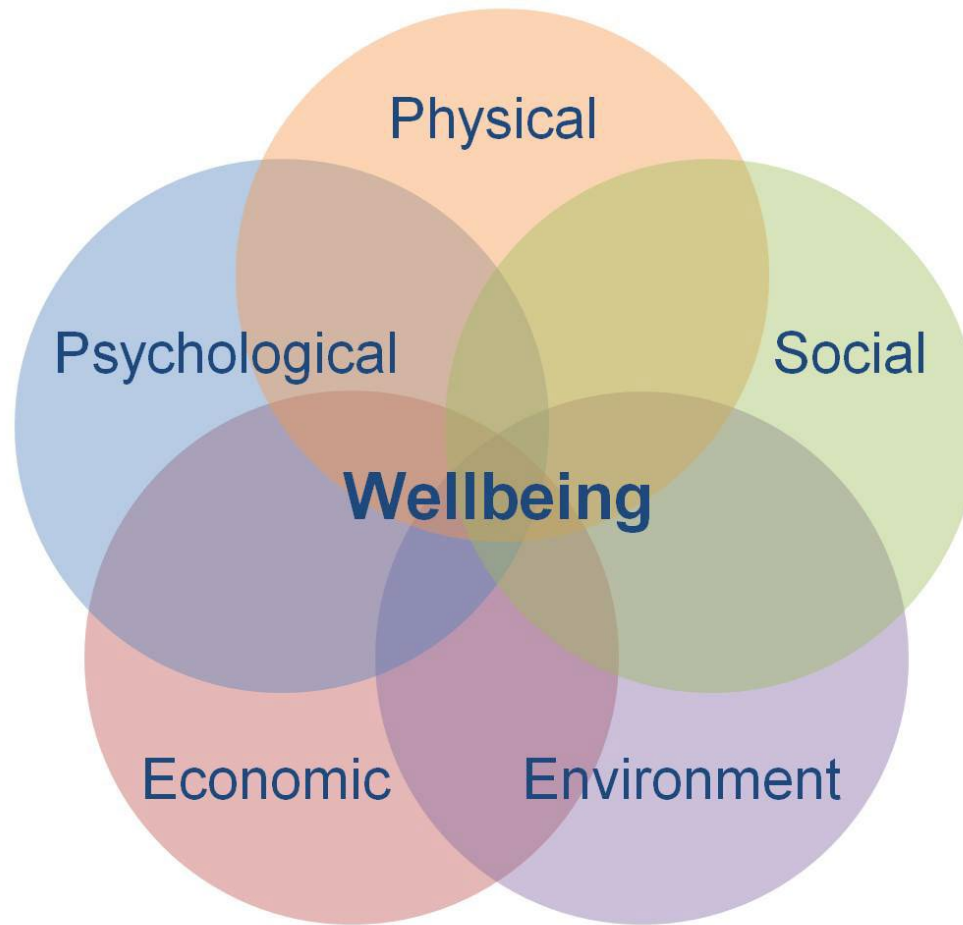


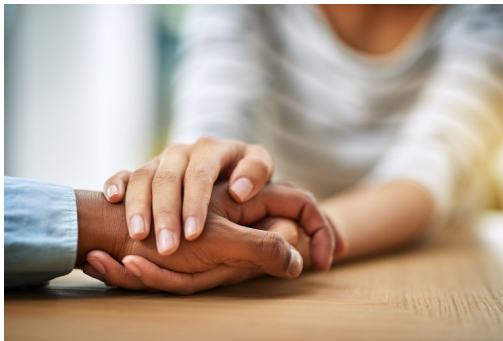
Image by Ian Lunt is licensed under [CC BY-NC-ND](#).

**Your Future. Our Focus.**

# Project Example: Student Success and Well-Being Collection



*Okanagan Charter* An International Charter for Health Promoting Universities and Colleges. (2015)



Microsoft stock images.

**Your Future. Our Focus.**

# Project Example: Student Success and Well-Being Collection



**A student-driven collection development project in order to increase library resources that will support the success of students who have been historically marginalized in higher education.**

Gender and  
Sexuality  
Resource Center

Undocumented  
Student  
Resource Center

Latino Resource  
Center

Military and  
Veteran Services



# Project Example: Student Success and Well-Being Collection



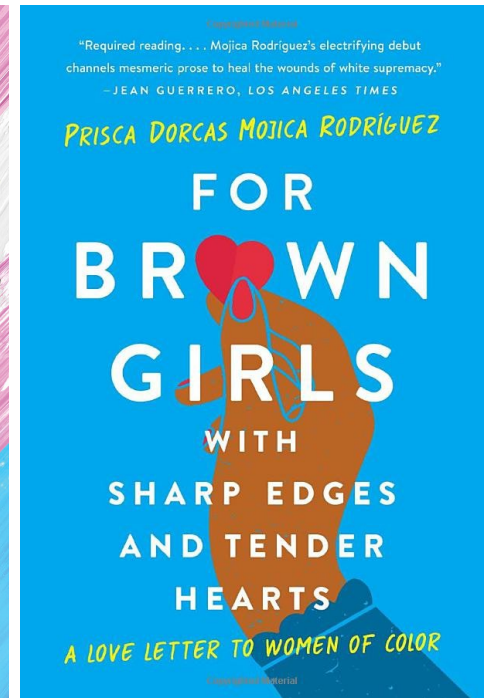
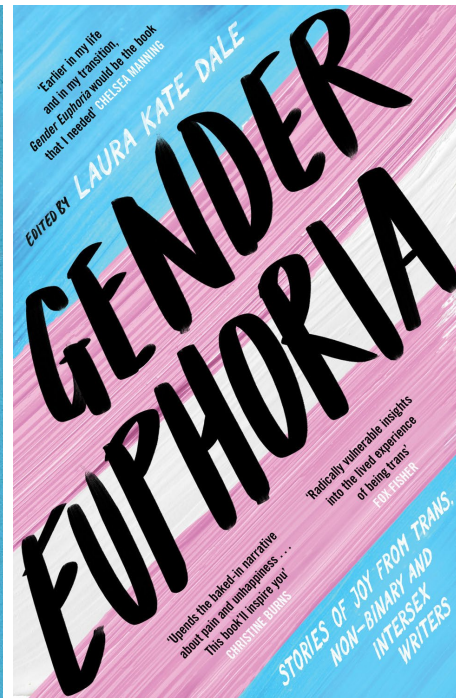
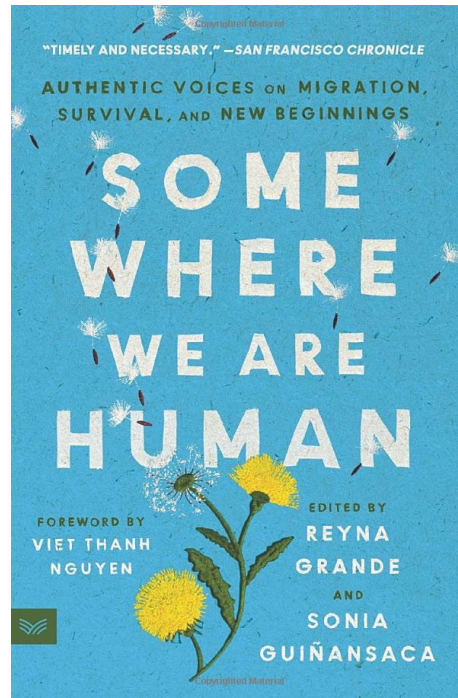
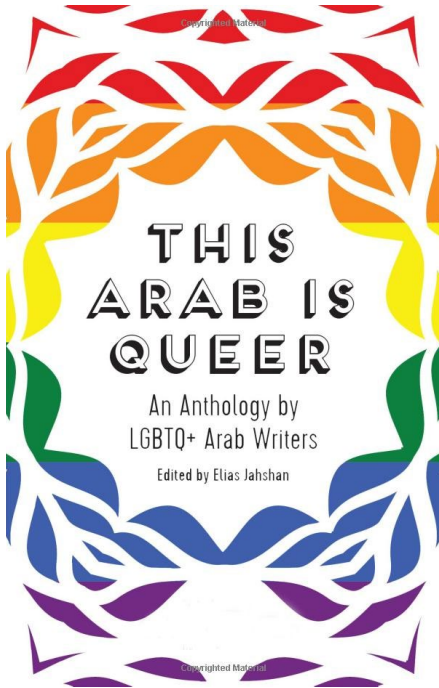
## Criteria

- Not currently held by NIU libraries
- Available in print
- Not a textbook
- They support student success. For example:
  - books that focus on study habits,
  - mental or physical wellbeing,
  - navigating college,
  - fiscal habits,
  - and those related to the experiences of students with identities that have been historically marginalized.

# Project Example: Student Success and Well-Being Collection



## Sample Titles



Your Future. Our Focus.

## Project Example: Asian poetry in English translation and Asian American poetry



- The Southeast Asia Collection at NIU is of the top collections of its kind in the US
- Books on Asian poetry in English have not been well collected for two main reasons:
  - the research interests within Southeast Asian Studies
  - Asian American Studies is not the focus of the collection

## Project Example: Asian poetry in English translation and Asian American poetry



- Poetry is a universal expression of culture and identity
- \$1,000 to acquire 63 books: poetry from Asia in English translation and poetry by Asian Americans
- Serving DEI purposes Asian American students, and the public

# Summary



- 7 projects
- \$10,800 allocated
- 296 items
- Mainly physical books, some ebooks and scores
- Topics
  - Poetry
  - Student success
  - Music
  - Children's picture books
  - Counseling
- Success! We will continue the program in FY24

# Contact Information



- Hao Phan, Southeast Asia Curator  
[hphan@niu.edu](mailto:hphan@niu.edu)
- Kimberly Shotick, Student Success Librarian  
[kshotick@niu.edu](mailto:kshotick@niu.edu)
- Gwen Gregory, Associate Dean for Collections Management  
[ggregory@niu.edu](mailto:ggregory@niu.edu)