



Batch Loading MARC Records for Electronic Resources at the University of Michigan Library

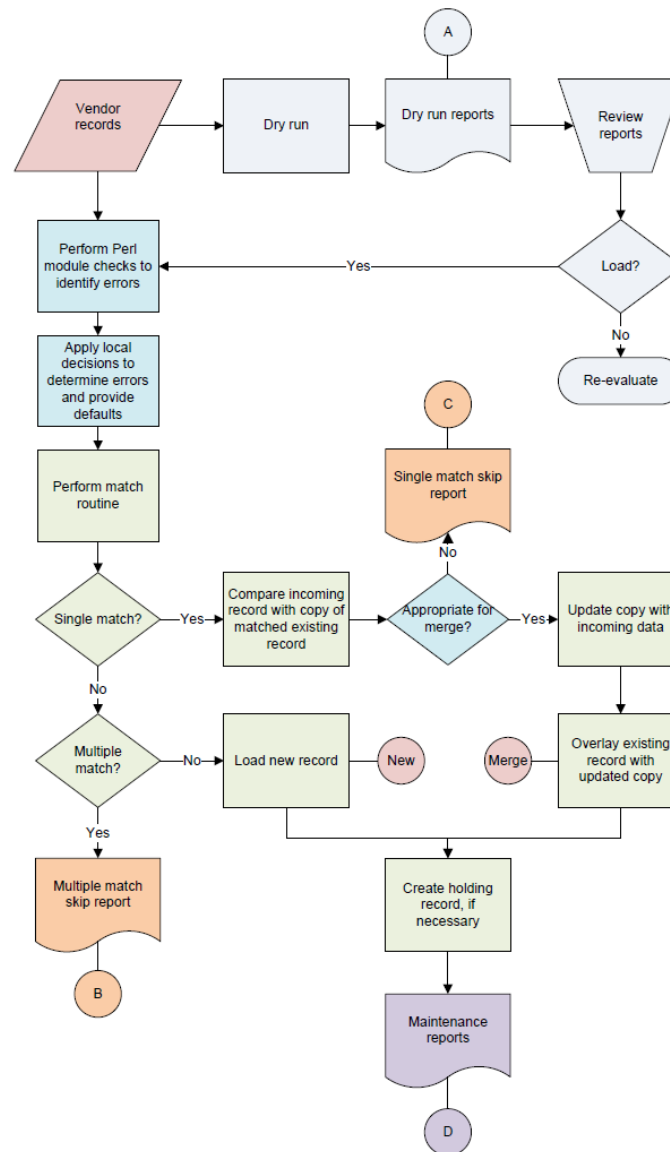
Connie McGuire

Electronic Resources Cataloging

Vicki Dillon

Library Systems

Batch Loading Procedure Workflow





Goal

Implement a standard validation process for the timely batch loading of MARC records for large sets of electronic resources that we receive from a variety of sources so users are able to retrieve the records when searching the catalog.



Background Information

The University of Michigan Library:

- Follows the single record approach
- Shares the catalog with three other libraries
- Uses a batch process to load records for large sets of electronic resources
- Has an Ex Libris Aleph catalog



Broad Overview

- Record retrieval
- Initial review
- Validation
- Matching, loading, and merging
- Post-load error resolution
- Dry run
- Vendor profile
- Tracking database



Record Retrieval Options

- FTP from ftp site
- Download from website
- Email attachment



Initial Review - Systems

Uses MarcEdit and/or a Perl program for viewing MARC records to:

- Confirm validity of MARC records
- Identify character sets and issues
- Get record counts



Initial Review - Cataloging

- Unique 035 record identifier
- 710 or 730 vendor added entry
- 856 with a \$z note
 - 856 \$z Access to the <vendor name> online version is restricted



Local Policy

- Corrections are made to:
 - Access points
 - Data elements that affect record retrieval
- Corrections are not made when the errors do not affect access



Validation

Perl

- Lint and Errorcheck
- Local program that makes corrections and supplies defaults



Errors and Actions

Errors are linked to one of the following actions:

- Ignore the error
- Remove the data
- Use a local default
- Load the record and report the error
- Load the record and suppress it from public view
- Terminate processing



969 Samples

- 96999 \$\$aREPORT preload validation error\$\$b020: Subfield a has bad checksum, 1212121212(cased)
- 96999 \$\$aSUPPRESS preload validation error\$\$b245: Field is not repeatable
- 96999 \$\$aREPORT local routine error\$\$brecord lacked 007, created default 007



Match Points - Existing

Existing catalog record:

- System control number – 035
- LCCN – 010 \$a; 010 \$z
- ISBN – 020 \$a; 020 \$z



Match Points - Incoming

Incoming vendor record:

- System control number – 035; 776 \$w (OCoLC)
- LCCN – 010 \$a; 776 \$w (DLC)
- ISBN – 020 \$a; 020 \$z, 776 \$z



Match Processing

Aleph matching mechanism

- Match criteria
- Each incoming record is placed in one of three files:
 - Matched more than one existing record
 - Matched only one existing record
 - Matched no existing record



Multiple Match Processing

The holdings location information associated with all existing matched records is examined to determine if the incoming record can be:

- Treated as a new record
- Treated as a single match
- Rejected and reported

Multiple Match Skip Report

Flowchart “B”

LDR ^^^^^nam^^2200349^a^4500

006 m^^^^^^^^^d^^^^^^^^^^

007 cr^cn|||||||

008 990514s2000^^^^enkab^^^sb^^^^001^0^eng

010 \$\$z777888

020 \$\$a1234567890

035 \$\$a(EVND)xyz5000328

040 \$\$aEVND\$\$cEVND\$\$dMiU

1001 \$\$aFine, Matthew.

24513 \$\$aNation and society\$\$h[electronic resource]/\$\$cMatthew Fine.

260 \$\$aCambridge, UK ;\$\$aNew York, NY :\$\$bCambridge University Press,\$\$c2000.

651 0 \$\$aRhine River Valley\$\$xSocial conditions.

7300 \$\$aElec Vendor Digital Library.

85640 \$\$zAccess to the Elec Vendor Digital Library online version restricted; authentication may be required:\$\$u<http://site.evendor.com/lib/umich/Doc?id=5000328>

96999 \$\$aREPORT preload validation error\$\$b245: First word, nation, does not appear to be an article, check 2nd indicator (3).


MAT \$\$a004060332,006060447



Single Match Processing

A locally written Perl program:

- Examines and compares a copy of the matched existing record and the incoming record
- Identifies conflicts
- Merges incoming fields into the copy
- Inserts appropriate 969 field(s) into the copy
- Reports and rejects, or prepares the merged record for loading



Merged Record (without error)

Flowchart “Merge”

LDR ^^^^^nmm^^2200349^a^4500

006 m^^^^^^^^d^^^^^^

007 cr||n|||||||

008 001027s2000^^^^enka^^^^sb^^^^001^0^eng

020 \$\$a0415236978 (hardcover)

020 \$\$a9780001234567 (ebook)

035 \$\$a(EVND)xyz2002502

040 \$\$aEVND\$\$cEVND\$\$dEYM

1001 \$\$aGannon, Julia.

24510 \$\$aNetworking children\$\$h[electronic resource]:\$\$bcare and family life in later childhood/\$\$cJulia Gannon.

260 \$\$aLondon :\$\$bRoutledgeFalmer,\$\$c2000.

300 \$\$avii,232p. :\$\$bill. ;\$\$c23 cm.

650 0 \$\$aChildren\$\$xFamily relationships.

7300 \$\$aElec Vendor Digital Library.

85641 \$\$zAccess to the Elec Vendor Digital Library online version restricted;
authentication may be required:\$\$u<http://site.evendord.com/lib/umich/Doc?d=2002502>



Single Match Skip

Conditions causing the merge to be skipped:

- Existing record already has URL for vendor
- Existing record is suppressed
- Existing record has no holdings



Single Match Skip Report

Flowchart “C”

LDR ^^^^^nam^^22003254a^4500
006 m^^^^^^^^d^^^^^^
007 cr|||n|||||||
008 000330s2001^^^^enkab^^^sb^^^^001^0^eng
020 \$\$a1212121212(cased) :\$\$c45.00
035 \$\$a(EVND)xyz2002446
040 \$\$aEVND\$\$cEVND\$\$dMiU
1001 \$\$aWilliams, Martin,\$\$d1971-
24510 \$\$aCharting cyberspace\$\$h[electronic resource]\$\$cMartin Williams.
260 \$\$aLondon ;\$\$aNew York :\$\$bRoutledge,\$\$c2001.
650 0 \$\$aComputers and civilization.
7300 \$\$aElec Vendor Digital Library.
85640 \$\$zAccess to the Elec Vendor Digital Library online version restricted; authentication
may be required:\$\$u<http://site.evendor.com/lib/umich/Doc?id=2002446>
96999 \$\$aREPORT preload validation error\$\$b020: Subfield a has bad checksum,
1212121212(cased)
96999 \$\$a**SKIP** MERGE \$\$bmatched sys rec 003724124 already has an 856 for this vendor,
skipped



New Record (with errors)

Flowchart “New”

LDR ^^^^^nmm^^2200349^a^4500
001 xyz2002502
003 EVND
006 m^^^^^^^^d^^^^^^^^
007 cr||n|||||||
008 001027s2000^^^^enka^^^^sb^^^^001^0^eng
010 \$\$z987654
020 \$\$a9780415236977 (hardcover)
035 \$\$a(EVND)xyz2002502
040 \$\$aEVND\$\$cEVND\$\$dMiU
1001 \$\$aGannon, Julia.
24510 \$\$aNetworking children /\$\$h[electronic resource]\$\$cJulia Gannon.
24510 \$\$aNetworking children\$\$h[electronic resource]:\$\$bcare and family life in later childhood/\$\$cJulia Gannon.
260 \$\$aLondon :\$\$bRoutledgeFalmer,\$\$c2000.
650 0 \$\$aChildren\$\$xFamily relationships.
7300 \$\$aElec Vendor Digital Library.
85640 \$\$zAccess to the Elec Vendor Digital Library online version restricted; authentication may be required:
 \$\$uhttp://site.evendor.com/lib/umich/Doc?id=2002502
96999 \$\$aSUPPRESS preload validation error\$\$b245:Field is not repeatable.
96999 \$\$aSUPPRESS local routine error\$\$bLDR/06 is m
96999 \$\$aREPORT local routine error\$\$brecord lacked 007, created default 007



Load Reports

Flowchart “D”

Suppressed Record Report

004870199 24510 \$\$aNetworking children /\$\$h[electronic resource]\$\$cJulia Gannon.

004870199 24510 \$\$aNetworking children\$\$h[electronic resource] :\$\$bcare and family life in later childhood/\$\$cJulia Gannon.

004870199 96999 \$\$aSUPPRESS preload validation error\$\$b245: Field is not repeatable.

004870199 96999 \$\$aSUPPRESS local routine error\$\$bLDR/06 is m

004870199 96999 \$\$aREPORT local routine error\$\$brecord lacked 007, created default 007

Non-Suppressed Record Report

006060450 24510 \$\$aAnimals in space\$\$h[electronic resource]\$\$cMary Jones.

006060450 96999 \$\$aREPORT preload validation error\$\$b020: Subfield a has bad checksum, 1765748590(cased)



Load Report Review

- Catalogers decide:
 - Load as new
 - Merge with existing Aleph record
 - Do not load
 - Unsuppress the loaded record
- Catalogers communicate back to Systems
- Systems processes previously unloaded records through a second pass



Vendor Profile

- Record containing vendor specific parameters
- Resides on server
- Accessed by all load steps
- Sample profile entries:
 - vprof_7xx 710 or 730, which to add including indicators
 - vprof_856_subz value for 856\$z, e.g. Access to the [vendor] online version restricted; authentication may be required:
 - vprof_match_routine match routine from tab_match for p_manage_36, e.g. MULT1



Dry Run

- Identifies and addresses problems before the actual load
- Reports
 - Flowchart item A, Error Summary Report (with counts)
 - 17 96999 \$\$aSUPPRESS local routine error\$\$bLDR/06 is m
 - 2 96999 \$\$aSUPPRESS preload validation error\$\$b245: Field is not repeatable.
 - 1 96999 \$\$aSKIP MERGE \$\$bmatched sys rec 003724124 already has an 856 for this vendor
 - Sample Records Reports
 - Some to be loaded as new
 - Some to be merged with existing
- Review
 - Reports delivered to Cataloging staff
 - Catalogers communicate findings to Systems



Tracking Database

- Each load has a record in the database
- The database tracks information about the:
 - Dry run
 - Loading of records into production
 - Number of records loaded as new and number of records that were merged



Discussion Topics

- What are the strengths and limitations of the tools that are available for retrieving, loading and reviewing large record sets?
- Given that some record sets require a significant amount of effort to load, how “free” are the records that vendors include in license agreements?
- What level of staff expertise is required to manage and monitor batch record loads?
- How can we monitor the quality of the records in large sets?
- How can librarians collaborate with vendors to improve the quality of their record sets?

THANK YOU

Connie McGuire

cmcguire@umich.edu

Vicki Dillon

vjdillon@umich.edu