



“IT WASN'T OLD WHEN WE BOUGHT IT”: EXPANDING CATALOG RECORDS WITH ELEMENTS OF DESCRIPTIVE BIBLIOGRAPHY

Allison Jai O'Dell / Special Collections Cataloger / Goucher College Library



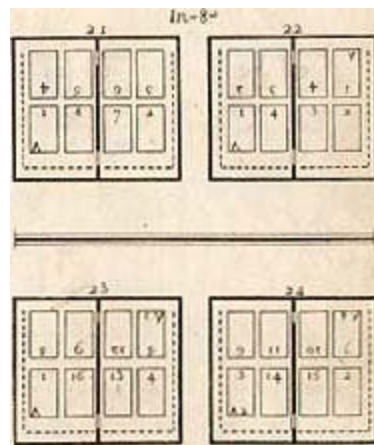
The Book as Artifact

Descriptive bibliography: “the close physical description of books”

- Belanger, Terry. “Descriptive Bibliography” in Jean Peters, ed., *BookCollecting: A Modern Guide* (New York and London: R. R. Bowker, 1977), 97-101.

Format, Signatures & Collation

- Format given with the physical description, and a signature statement included as a note.
 - ▣ [4], 36 p. : ill. (woodcuts) ; 23 cm. (8vo)
 - ▣ Signatures: A-E⁸



Octavo Format

For a relatively concise outline of bibliographical description and the formula for a signature statement, see: Gaskell, Philip. *A New Introduction to Bibliography* (New York & Oxford: Oxford University Press, 1972), 321-335.

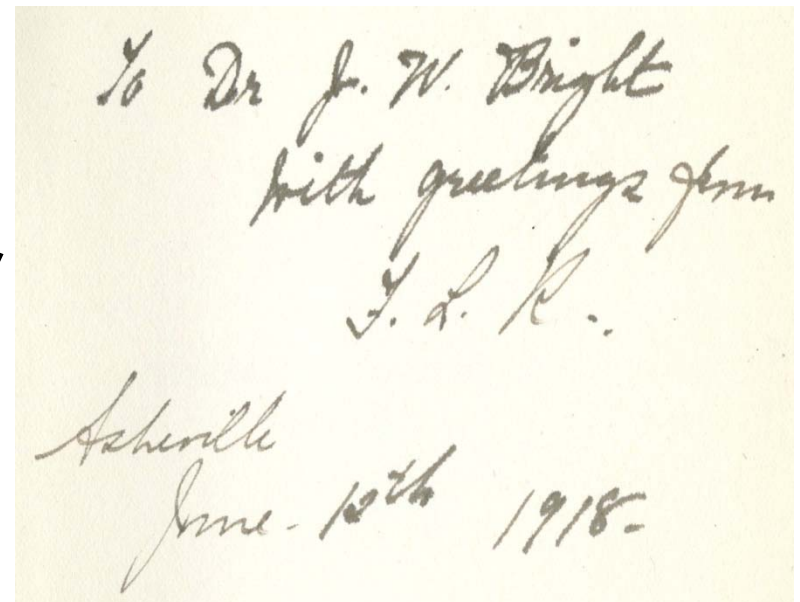


Publication Information

- In full, transcribed from the title page
 - ▣ London : Printed for J. Dodsley, in Pall-Mall; T. Cadell, (successor to Mr. Millar) in the Strand; and J. Johnson, N°. 8, Paster-noster Row, 1768.
 - ▣ London : Printed For Payne And Foss, Pall-Mall; By Thomas Davison, Whitefriars, 1829.

Provenance Evidence

- Note on immediate source of acquisition
- Other provenance evidence (annotations, bookplates, etc.)
 - ▣ Short details and location, e.g., “library copy has dedication from the author to James Wilson Bright, dated June 12th 1918, front flyleaf.”



To Dr J. W. Bright
with greetings from
J. L. R.
Ashville
June 12th 1918.

Binding Descriptions

- Material, color, decoration, approximate date, and location of manufacture; binder/designer if known
 - ▣ e.g., “Bound in green publishers’ cloth, rib grain, with Eastlake style ornament stamped in black and gold, ca. 1877, England”

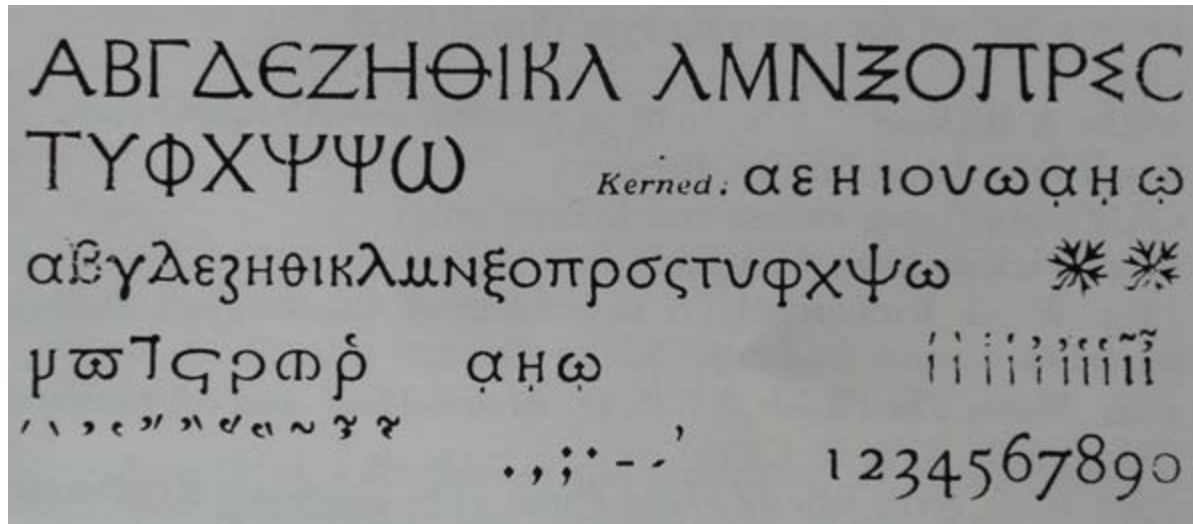


Cover decoration on:
Llewellynn Jewitt. *Half
Hours with Some English
Antiquities*. London:
Hartwick and Bogue, 1877.



Type & Printing Evidence

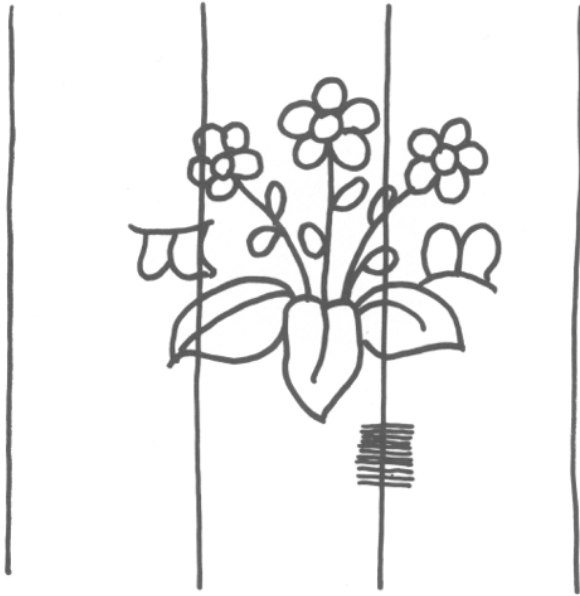
- Catalogs of incunabula include type measurements, numbers of lines and columns, and color of printing
- Consider what is most interesting: type ornaments, named printers, errors, fine press editions, etc.



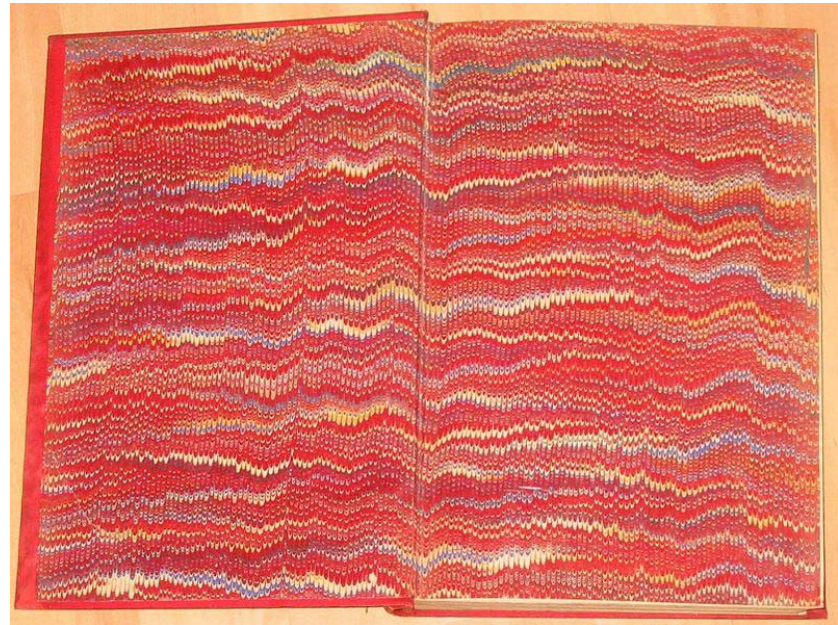
Robert Proctor's
“Otter” type, based on
the “Alcala” font of
1514 used by Arnaldo
Guillen de Brocar

Paper Evidence

- Material, Watermark & Countermark, Manufacturer, Treatment, Subsequent Applications



The “Primrose” watermark,
hallmark of the Kelmscott Press



Marbled endpaper



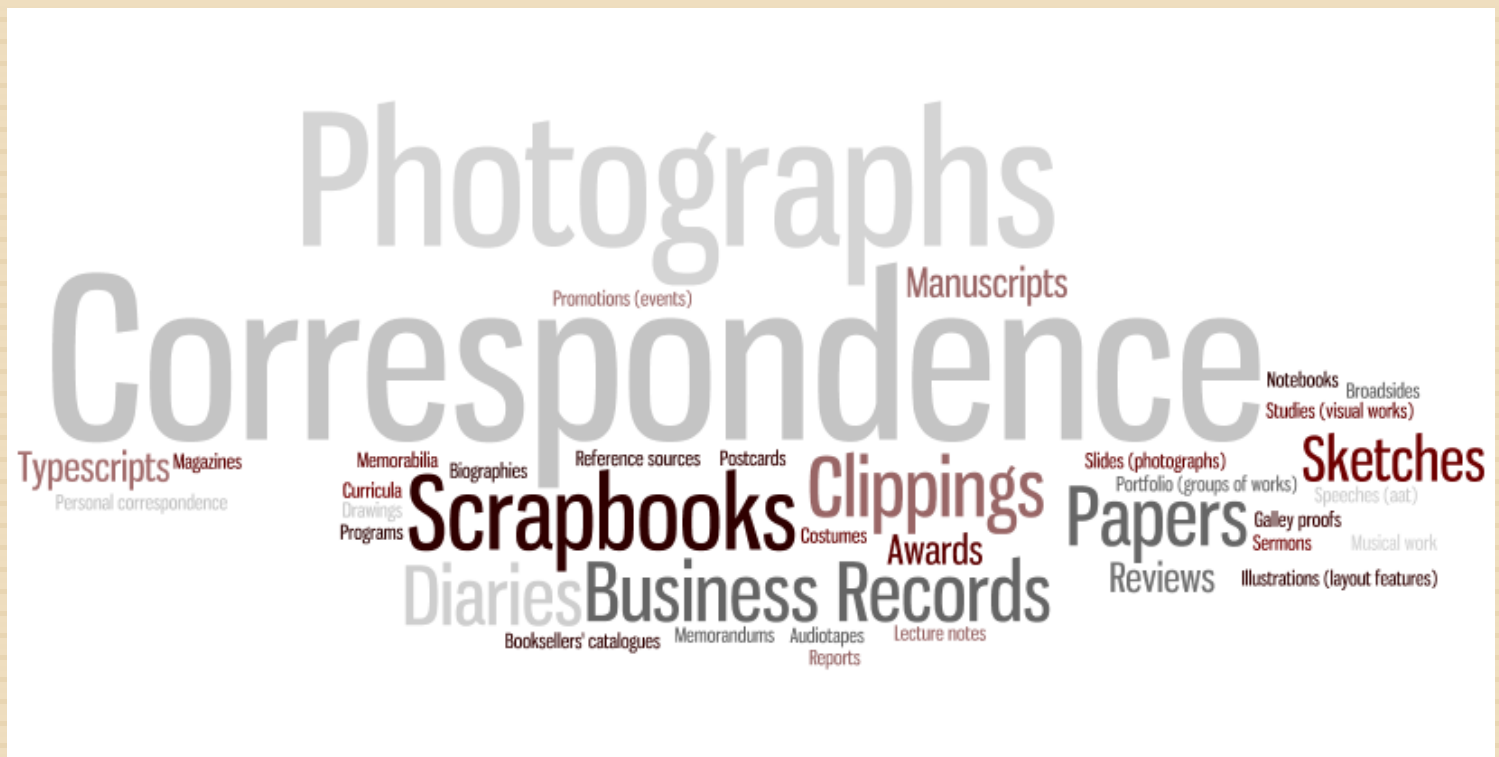
Genre Terms & Authority Control

- Index of the facets described in various notes
 - ▣ Vellum bindings – Italy – 19th century
 - ▣ Marginalia – England – 18th century
- Authority headings for contributors (artists, binders, designers, printers, booksellers, etc.)
- Controlled Vocabularies
 - ▣ RBMS Vocabularies
 - ▣ Publishers' Bindings Online Vocabularies
 - ▣ Art & Architecture Thesaurus



Beyond the Catalog

Visualizing and integrating metadata allows for simple, seamless marketing of collections



Visualizing Metadata

Tag cloud of material types in the Goucher College Special Collections

[Black stamping](#)

[Blind stamping](#)

[Blue stamping](#)

[Brown stamping](#)

[Cream stamping](#)

[Gold stamping](#)

[Gray stamping](#)

[Green stamping](#)

[Orange stamping](#)

[Pink stamping](#)

[Purple stamping](#)

[Red stamping](#)

[Silver/white metal stamping](#)

[Tan stamping](#)

[White stamping](#)

[Yellow stamping](#)

Gammar Gvrtons nedle / by Mr S. Mr. of Art ; edited by H. F. B. Brett-Smith.

LOCATION	CALL NO.	STATUS
Special Collections	PR2411 .G2 1920	LIB USE ONLY

Religion in literature and religion in life. : Being two papers / written by Stopford A. Brooke ...

LOCATION	CALL NO.	STATUS
Special Collections	BR125 .B735 1901	LIB USE ONLY

Ulfilas, apostle of the Goths : together with an account of the Gothic churches and their decline /

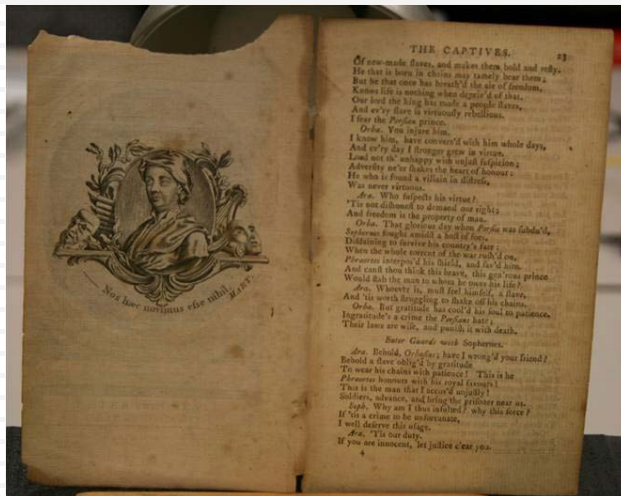
LOCATION	CALL NO.	STATUS
Special Collections	BR207 .S4 1885	LIB USE ONLY

Integrating Metadata

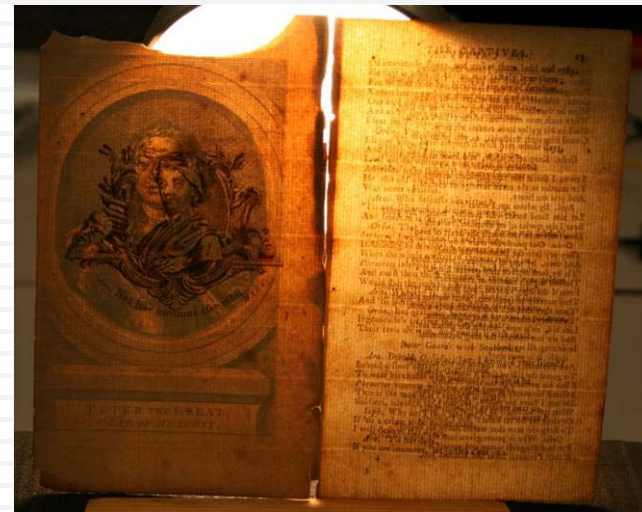
“Click-able” index of book-cloth colors in the James Wilson Bright Collection, which links to results in the Goucher College Library catalog

From: [Publishers' Cloth Bindings in the James Wilson Bright Collection](#)

Setting Limits



John Gay



... and Peter the Great?



Policy & Procedures

- ❑ Establish 'minimum level' records for materials
- ❑ Know which vocabularies to use
- ❑ Have appropriate reference sources on hand

libraryguides.goucher.edu/SCACatalogingTools

Thank you

Allison Jai O'Dell

Special Collections Cataloger

Goucher College Library

410-769-5064

Allison.ODell@goucher.edu

staff.goucher.edu/alode001