

# It Takes a Village: The Collaborative Construction of a Data Management Infrastructure



**ANNE C. ELGUINDI**  
**AMERICAN UNIVERSITY**

**ALA ANNUAL, 2012**  
**ALCTS METADATA INTEREST GROUP/LITA**

# Why Libraries Love and Hate Data



- The “data” format splinters quickly into many more formats
- Data is meaningless without metadata
- There is an inextricable tie to specialized software and skills
- Vendors of individual data sets are not well adapted to library licensing needs yet

# Why Libraries Love and Hate Data



- You might not really know what you're buying until you've already bought it
- It is an increasingly necessary component of research, but data literacy remains fairly low
- Although data is an information resource, the campus does not necessarily think of the library first

# Local Factors at American University



- Private, four-year university in Washington, DC
- Around 11,000 FTE, half of which are graduate students
- Heavy emphasis on the social sciences, particularly international studies and public affairs
- Primary library systems support is through the Washington Research Library Consortium, a partnership among nine university libraries

# Three Partnerships



- Hosting data
- Data workflow
- Data management plans

# Partnership One: Hosting Data



- Issues of storage, access, and discoverability

Office of  
Information  
Technology

University  
Library

Washington  
Research  
Library  
Consortium

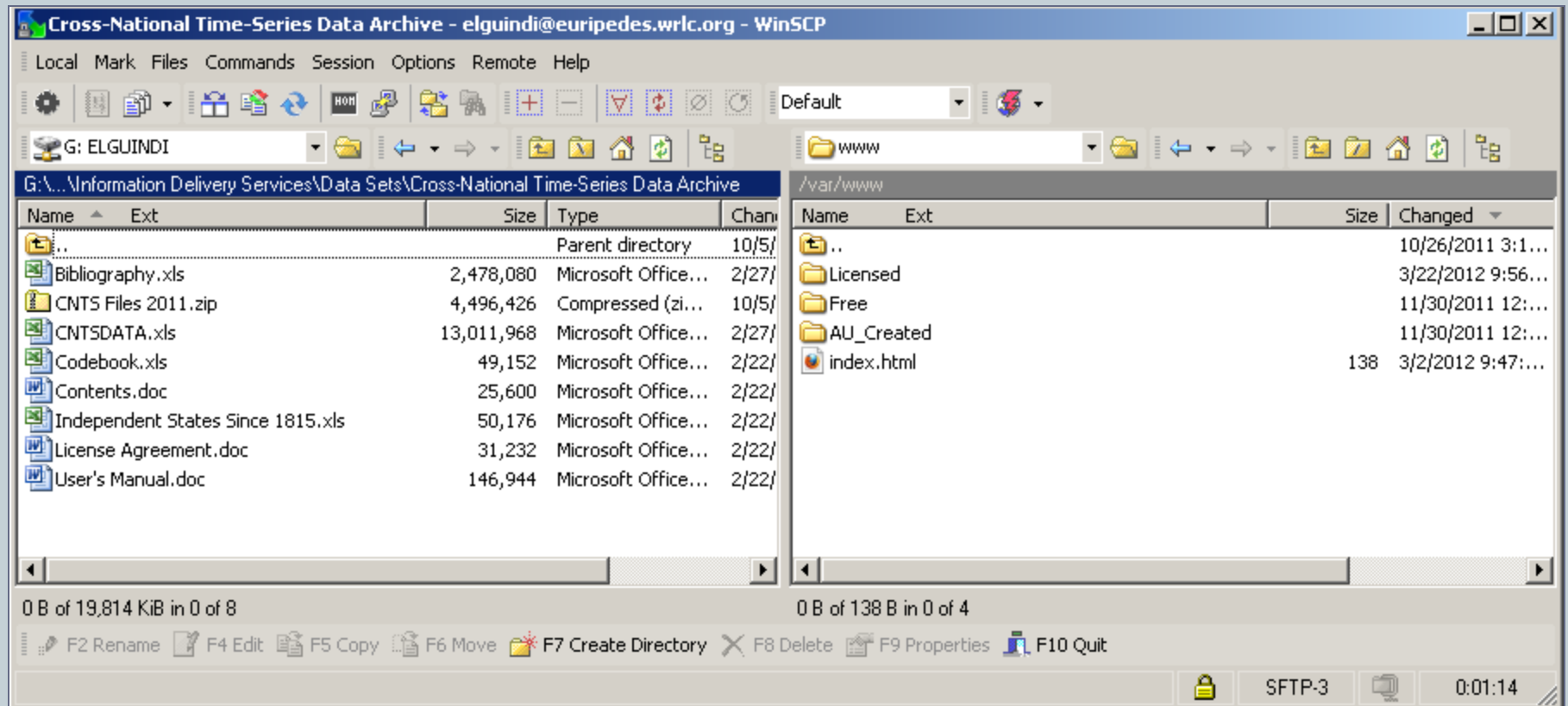
Center for  
Research,  
Teaching &  
Learning

# Creating a Mutual Understanding



- Storage: Sharepoint vs. Shared campus drive vs. WRLC server
- AU-Only Access: Institutional login vs. Proxy
- Discoverability: Institutional resource vs. Library catalog and Summon

# The Birth of Euripedes



- A virtualized linux server with 100G storage and 2G of RAM

# Access through the Online Catalog



## Cross-national Time-series Data Archive



[*electronic resource*].

### Availability

**STATUS:** Available

**Location:** AU: Data Sets

**Call Number:** [AU Data Sets](#)

**Number of Items:** 1

**Linked Resources:** [Click here to access CNTS Data Archive](#)

Request  
through  
Consortium  
Loan Services.

### Details

**Title:** Cross-national time-series data archive [electronic resource].

**Publisher/Date:** [Binghamton, NY] : Arthur S. Banks : Distributed by Databanks International, c2005.

**Description:** 1 CD-ROM ; 4 3/4 in.

**Subjects:** [Economic indicators --Databases.](#)

[Social indicators --Databases.](#)

[Political indicators --Databases.](#)

[Economic history --Statistics --Databases.](#)


[Social history --Statistics --Databases.](#)

[World politics --Statistics --Databases.](#)

# Access on the Euripedes Server



## Index of /Licensed/Cross-National\_Time-Series\_Data\_Archive

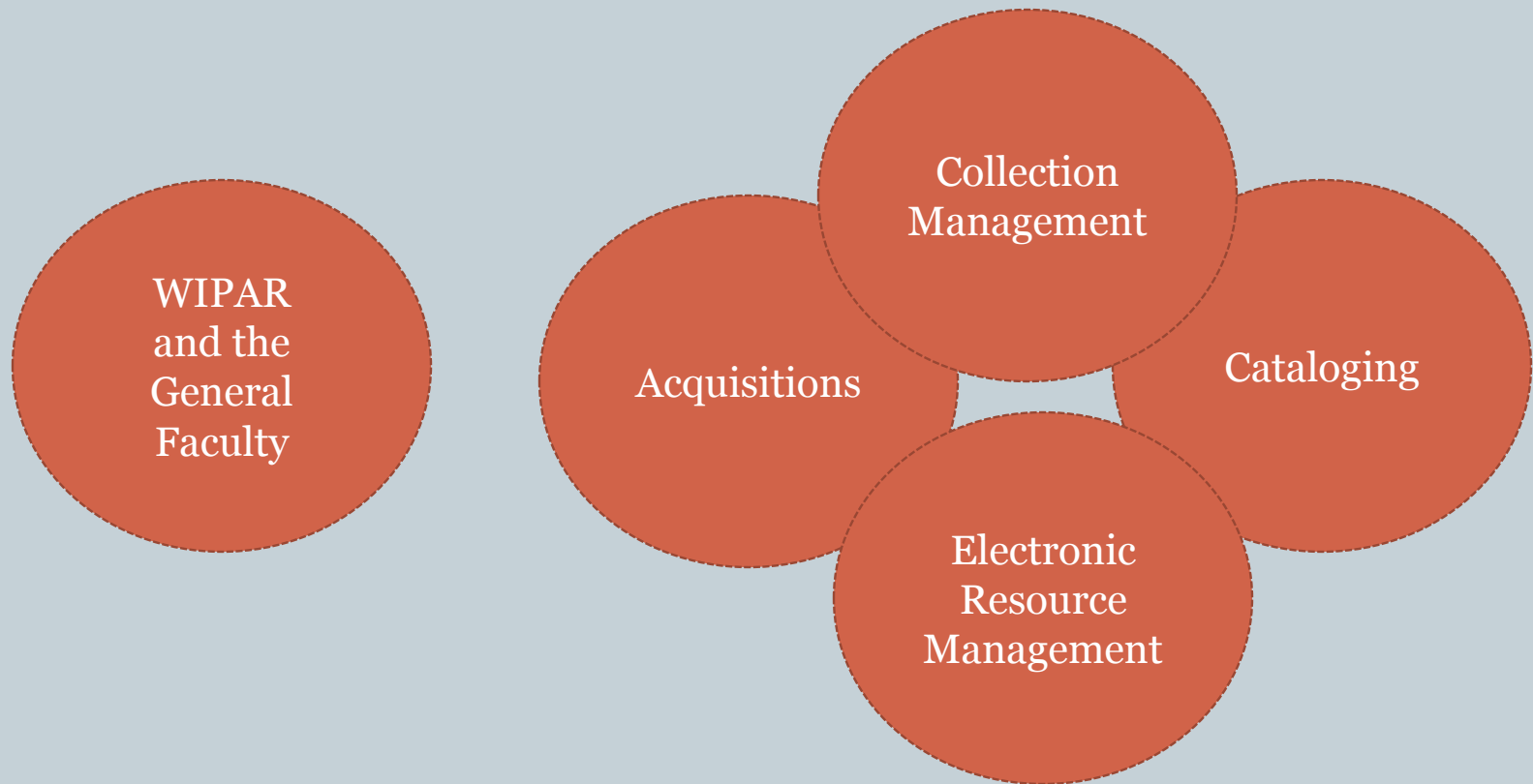
<u>Name</u>	<u>Last modified</u>	<u>Size</u>	<u>Description</u>
 <a href="#">Parent Directory</a>		-	
 <a href="#">Bibliography.xls</a>	05-Oct-2011 12:18	2.4M	
 <a href="#">CNTSDATA.xls</a>	05-Oct-2011 12:18	12M	
 <a href="#">Codebook.xls</a>	05-Oct-2011 12:18	48K	
 <a href="#">Independent States Since 1815.xls</a>	05-Oct-2011 12:18	49K	
 <a href="#">User's Manual.doc</a>	05-Oct-2011 12:18	144K	

*Apache/2.2.14 (Ubuntu) Server at euripedes.wrlc.org Port 80*

# Partnership Two: Data Workflow



- Issues of licensing and workflow clarity



# Communication Issues



- **With the faculty:**
  - Data is a high demand area often related to grants and grant proposals
  - The library's collection development policy is to purchase resources that can be accessed campus-wide – creates a conflict with typical data licenses
- **Within the library:**
  - Who is responsible? Differentiated by continuing vs. one-time?
  - New format brings up new description and access issues

# Data Workflow



- Application of CORAL, an open source ERMS developed by the University of Notre Dame

# Data Workflow: Selection



## Add New Resource



## CORAL Resources

\* required fields

### Product

Name: \*

Description:

Provider:

URL:

### Format \*

☒ Electronic

☐ CD-ROM

### Acquisition Type \*

☒ Paid

☐ Free

☐ Gift Fund

☐ Open Access

☐ Supplemental Funds

☐ Trial

### Initial Cost

Fund:

Price:

USD ▼

Type:

Add

### Resource Type

☒ Data set

☐ Database

☐ Digital  
Collection

☐ E-book - Single  
Title Firm Order

☐ E-book - Single  
Title Standing Order

☐ E-book  
Collection

☐ E-journal -  
Single Title

☐ E-journal  
Package

### Notes

Include any additional information

save

submit

cancel

# Data Workflow: Technical Services



## Edit Workflow

### Resource Entry Requirements

Acquisition Type:

Paid

Format:

Electronic

Type:

Data set

### Workflow Steps

Name:	Approval/Notification Group:	Parent Step	
<input type="text"/>	Acq Funding Approval	<input type="text"/>	<input type="button" value="Add"/>
↓ Funding Approval	Acq Funding Approval		×
↑ ↓ Confirm Pricing, Request License	IDS Director	Funding Approval	×
↑ ↓ Licensing	IDS Director	Confirm Pricing, Request Li	×
↑ ↓ Place Order with Vendor	IDS Director	Licensing	×
↑ ↓ Request Invoice from Vendor	IDS Director	Place Order with Vendor	×
↑ ↓ Create Firm Order in Voyager	IDS Director	Licensing	×
↑ ↓ Transfer Funds from BKS	Acq Librarian	Create Firm Order in Voyag	×
↑ ↓ Load Data on to Euripedes Server	IDS Director	Place Order with Vendor	×
↑ ↓ Receive Data on Purchase Order	IDS Director	Load Data on to Euripedes	×
↑ ↓ Create Invoice in Voyager	Acq Receiving	Transfer Funds from BKS	×
↑ ↓ Catalog Record and Holdings	Cataloging	Load Data on to Euripedes	×
↑ Access	ERM Unit	Catalog Record and Holdin	×

# The audata Location Code



- All data and statistics databases were moved to a new audata location code within Voyager
- This location code was shared with individually-licensed data sets

## >Search the Library's Data Holdings

<input type="text"/>	<input type="text" value="Title"/>
<input type="button" value="Search"/>	

# Partnership Three: Data Management Plans



- Issues of legal and ethical issues, university liability, technological infrastructure

Center for  
Research,  
Teaching &  
Learning

University  
Library

Office of  
Information  
Technology

Washington  
Research  
Library  
Consortium

Office of  
Sponsored  
Programs

Risk  
Management

Institutional  
Review Board

Grant-  
Seeking  
Faculty

# Navigating the Politics



Approval to create  
guide

Presentation to the Academic  
Technology Steering  
Committee

Contacted campus partners to  
arrange a meeting

# The Data Management Plan LibGuide



## LIBRARY SUBJECT GUIDES



[Library](#) » [The Library's Subject Guides!](#) » [Data Management Plans](#)

[Admin Sign In](#)

### Data Management Plans

This is a guide for researchers applying to grants that require data management plans or data sharing plans, but it also contains general information about data management practices.

Last Updated: May 31, 2012 | URL: <http://subjectguides.library.american.edu/dmp> | [Print Guide](#) | [RSS Updates](#) | [Email Alerts](#) | [SHARE](#) [f](#) [t](#) [e](#) ...

[About DMPs and Data Management](#)

[DMP Templates](#)

[AU Campus Resources](#)

**About DMPs and Data Management**

[Print Page](#)

Search:

This Guide

[Search](#)

#### Campus Contacts

Funder requirements: [Office of Sponsored Programs](#)

Data practices: [Social Science Research Lab](#)

Legal and ethical issues: [Institutional Review Board](#)

[Comments \(0\)](#)

#### What is a Data Management Plan?

Many federal agencies, including NIH and NSF, now require grant applications to include data management or sharing plans for projects that involve the collection or creation of data. These data management plans, usually expected to be around two pages or less, typically include such areas as a description of the data and metadata to be used in the project, how these data will be stored, managed, shared, and preserved, and any associated legal or ethical issues.

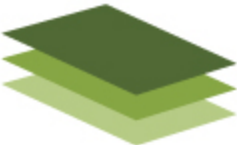
Here are links to the requirements of key agencies:

NSF: <http://www.nsf.gov/bfa/dias/policy/dmp.jsp>

NIH: [http://grants.nih.gov/grants/policy/data\\_sharing/](http://grants.nih.gov/grants/policy/data_sharing/)

NEH: <http://www.neh.gov/files/grants/datamanagementplans.pdf>

# DMP Tool: University Affiliation with the Help of OIT



## DMPTool

Guidance and Resources for your Data Management Plan

[Home](#) [About DMP Tool](#) [DMP News](#) [My Plans](#) [Funder Requirements](#) [Help ▾](#)

### Get Started

#### Login

If your institution is listed below the DMP tool will provide links to local data management resources and support available to you.

If you're using the DMP tool for the first time you'll be prompted to provide some additional information

— Select Your Institution —

— Select Your Institution —

American University

Arizona State University

California Polytechnic State University-San Luis Obispo

California State University, Chico

California State University, Fresno

# AU Template: Building Standardized Language



- The library's ability to provide open or controlled access to data
- The existing campus technological infrastructure, including servers and software
- The university's policies and procedures for ensuring privacy and confidentiality of data

# Future Directions



- A Data Services Librarian position has been requested as a conversion from an existing vacancy
- The university has decided to fund a GIS lab
- Increased data cataloging skills for Cataloging Services Unit
- Marketing to the faculty about storage for and dissemination of their data
- Promoting standardization of library-friendly licensing practices for data