



*The conversation
starts here...*

#ALAMW17

**ALA ATLANTA
MIDWINTER
MEETING & EXHIBITS**
January 20-24, 2017

Rethinking Children's Collections: Meeting the Unique Needs of Students with Dyslexia

**MARINA MORGAN
METADATA LIBRARIAN
FLORIDA SOUTHERN COLLEGE**

ALA American Library Association

Agenda

- Florida Southern College and Roberts Academy
- What is dyslexia?
- IFLA Guidelines for Library Services to Persons with Dyslexia
- Roberts Academy pilot project
- Should we change our cataloging workflows?
- What is next?



The Roberts Academy at Florida Southern College

- The Roberts Academy at Florida Southern College is the first transitional school for children with dyslexia in the state of Florida and one of only a few comprehensive specialized schools in the United States.

What is Dyslexia?

- From Greek dys (inadequate) + lexis (words)
- Dyslexia is the most common cause of reading, writing, and spelling difficulties.
 - It's not a sign of low intelligence or laziness
 - It's not due to poor vision
- The National Center for Education Statistics (NCES) definition
- International Dyslexia Association definition

What is Dyslexia?

When you see	Pronounce as
q	d or t
z	m
p	b
b	p
ys	er
a, as in bat	e, as in pet
e, as in pet	a, as in bat

Passage:

We pegin our qrib eq a faziliar blace, a poqy like yours enq zine.
 Iq conqains a hunqraq qrillion calls qheq work qogaqhys py qasign.
 Enq wiqh in each one of qhese zany calls, each one qheq hes QNA,
 Qhe QNA coqe is axecqly qhe saze, a zess-broquceq rasuze.
 So qhe coqe in each call is iqanqical, a razarkaple puq veliq claiz.
 Qhis zeans qheq qhe calls are nearly alike, puq noq axecqly qhe saze.
 Qake, for insqence, qhe calls of qhe inqasqines; qheq qhey're viqal is cysqainly blain.
 Now qhink apouq qhe way you woulq qhink if qhose calls wyse qhe calls in your prain.

Source: <http://www.pbs.org/wgbh/misunderstoodminds/experiences/readexp1b.html>

© PBS

#ALAMW17



ALA ATLANTA
MIDWINTER
MEETING & EXHIBITS
January 20-24, 2017

What is Deysilxa ?

goen Aicrvhe Ceigtaores Pgeas Tgas

Deysilxa

A frierd who has dlexiysa dcrebseid to me how she enrexpieecs mreadig. She *can* read, but it tekas a lot of cteoacnitrn, and the lrtets smeets to "jmup aornud".

I rrmbeemed rnedaiig about [tgpioyelycma](#). Wdoul'n't it be plsbsioe to do it inatierlecvy on a webstie with Jriavpacst? Sure it wluod.

Feel likie maknig a bkaoroklmt of this or sehionmtg? [Fork it](#) on ghitub.

Dsxiylea is czrherteiaacd by dlciffituy wtih lainreng to read fetlluny and wtih acuacarte csorempneohin detpsie nmroal inelectgnite. Tihs icdnlues dltfcfiuiy with pocolnohigal araesnwes, ponailchogol dneicdog, pinssoercg speed, otrhphrgoalc cindog, aidourty sorht-term mermoy, lngagaue silks/vbrael cenmhrieoopsn, and/or raipd nainmg.

Dvaplmeeeeontl rndieag dedorsir (DRD) is the most cmomon laeirng ditisiblay. Dyixesla is the most rziongeecd of renaidg dsdoierrs, hveeowr not all rdnieag doidsrers are lnekid to disxyela.

Some see dleyxisa as dtiiscnt from raenidg difefilctuis rsltniueg form other caseus, scuh as a non-ngculeirooal dieeifcncy wtih voisin or haenrig, or poor or ianeatuqde rneidag isttcuironn. There are tehre posreopd cvoitnge spebuyts of diysexla (aoiturdy, vuisal and ananittotel), aolguhth iindiduavl cseas of dsliexya are btteer eilaxnepd by sfieicpc udnlrneiyg niohlryaecocugpsl dcifetis and co-ocnuirrcg lnirnaeg disebtliais (e.g. aetttonin-difeict/htapvriityecy dsreoidr, mtah diitlsbaity, etc.). Aouhtlgh it is coerdnised to be a repicetve lnaggaue-bsaed laernng dtibailisy in the rercaesh lraetirtue, delxyisa also afectfs one's epxvesisre lguagane sillks. Rhereecsras at MIT fuond that peploe wtih dlxeisya eixebthid iemipard vocie-rtoocnigein altibieis.

Scruee: [Wiieidkpa](#)

Pehsbulid
03 March 2016

Tags

[dsliexya](#) ¹

[tcmmyegopila](#) ¹

[Jsaavrcit](#) ¹

Source: <http://geon.github.io/programming/2016/03/03/dsxyilea>

© Victor Widell 2012

#ALAMW17



ALA ATLANTA
MIDWINTER
MEETING & EXHIBITS
JANUARY 20-24, 2017

What do books
on shelves look
like to students
with dyslexia?



Lots of Questions...

- What are our students' challenges?
- How can we respond to our students' needs?
- What are other libraries doing?
- Is there any research available?



ALA ATLANTA
MIDWINTER
MEETING & EXHIBITS
January 20–24, 2017



International Federation of
Library Associations and Institutions

**IFLA Guidelines for Library
Services to Persons with
Dyslexia**

- Revised and extended

**A Joint Project of IFLA Sections:
Library Services to People with Special Needs (LSN)
Libraries Serving Persons with Print Disabilities (LPD)**

December 2014

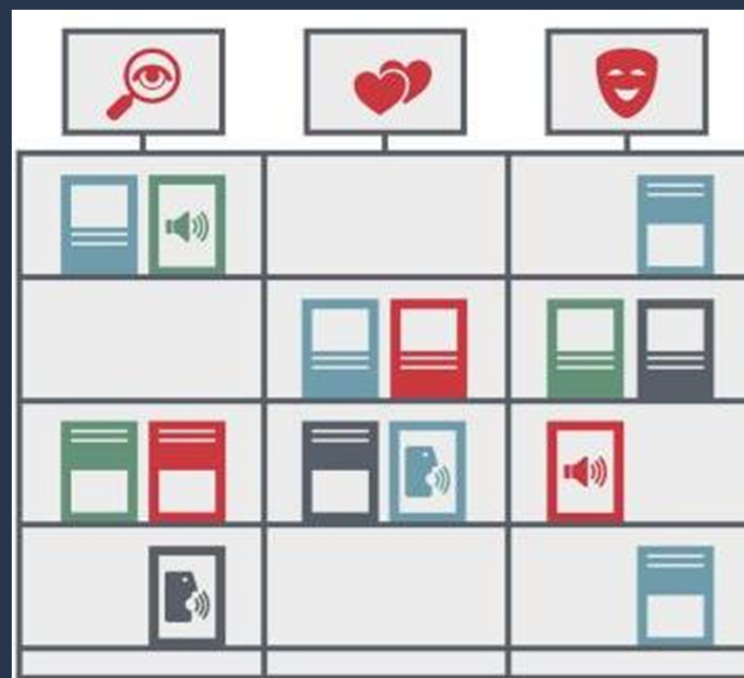
English

Source: http://www.ifla.org/files/assets/lsn/publications/guidelines-for-library-services-to-persons-with-dyslexia_2014.pdf

#ALAMW17

The Library Space

- Front cover facing outwards or in a combination with spines facing the users
- Easy-to-read signs and pictograms
- No continuous capitals, italics or underlining



Source: IFLA Guidelines for Library Services to Persons with Dyslexia, p.9
http://www.ifla.org/files/assets/lsn/publications/guidelines-for-library-services-to-persons-with-dyslexia_2014.pdf



ALA ATLANTA
MIDWINTER
MEETING & EXHIBITS
January 20-24, 2017

Before the Project



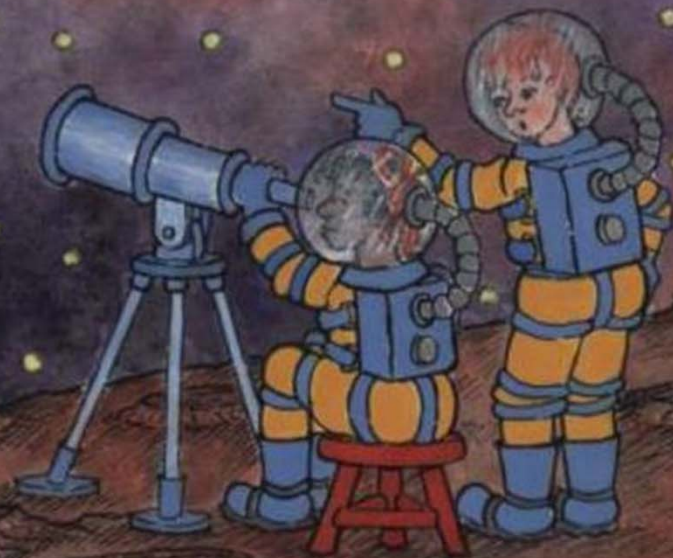
#ALAMW17

Project Workflow

- Weed
- Arrange collection by subject
- Place all materials with the front cover facing outwards
- Place similar subjects adjacent to one another
- Use dyslexia friendly font and pictograms
- Adjust shelving
- Add local notes in the item record
- Add labels to bins and books
- Keep a barcode and subject list

WHAT'S SO SPECIAL ABOUT PLANET EARTH?

Robert E. Wells



Copyrighted Material

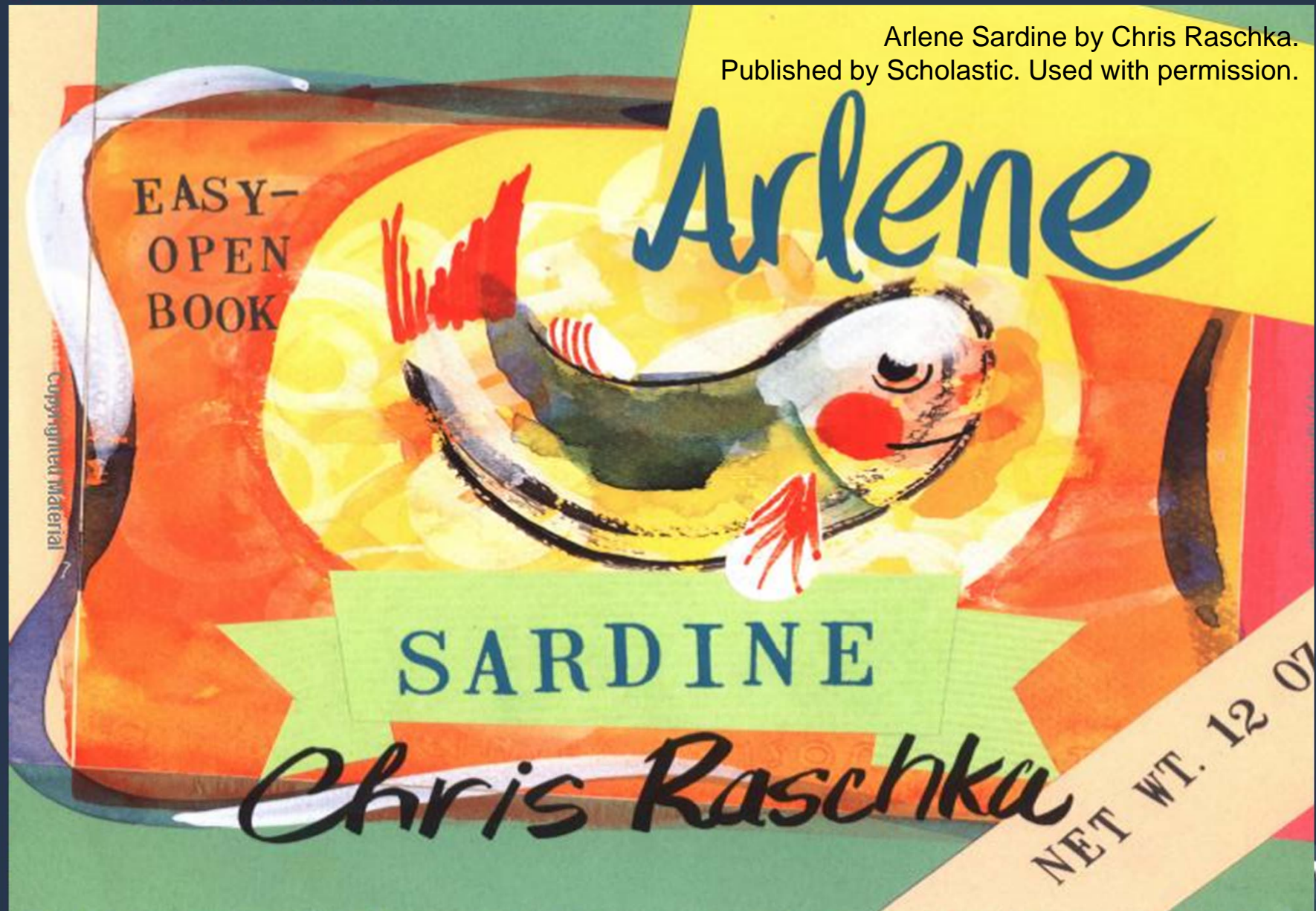
Artwork from What's So Special about Planet Earth by Robert E. Wells.
Published by Albert Whitman & Company. Used with permission.

#ALAMW17



ALA ATLANTA
MIDWINTER
MEETING & EXHIBITS
January 20-24, 2017

Arlene Sardine by Chris Raschka.
Published by Scholastic. Used with permission.



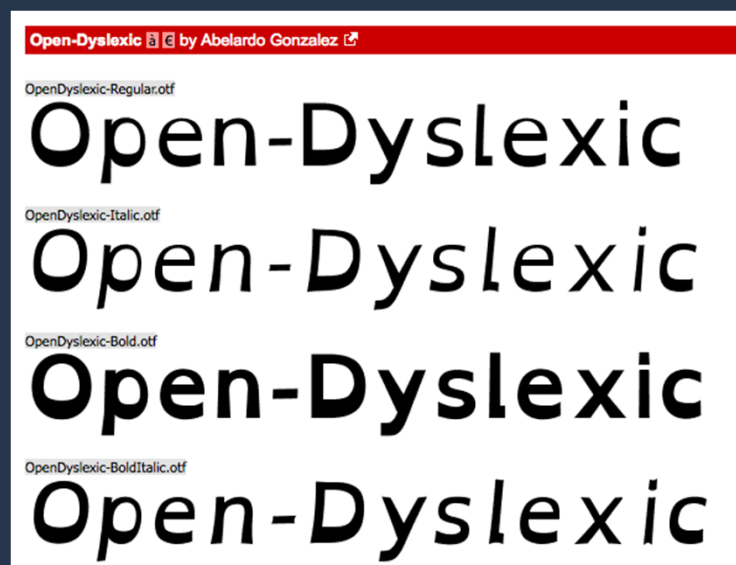


ALA ATLANTA
MIDWINTER
MEETING & EXHIBITS
January 20-24, 2017

Arrange by subject



Open-Dyslexic

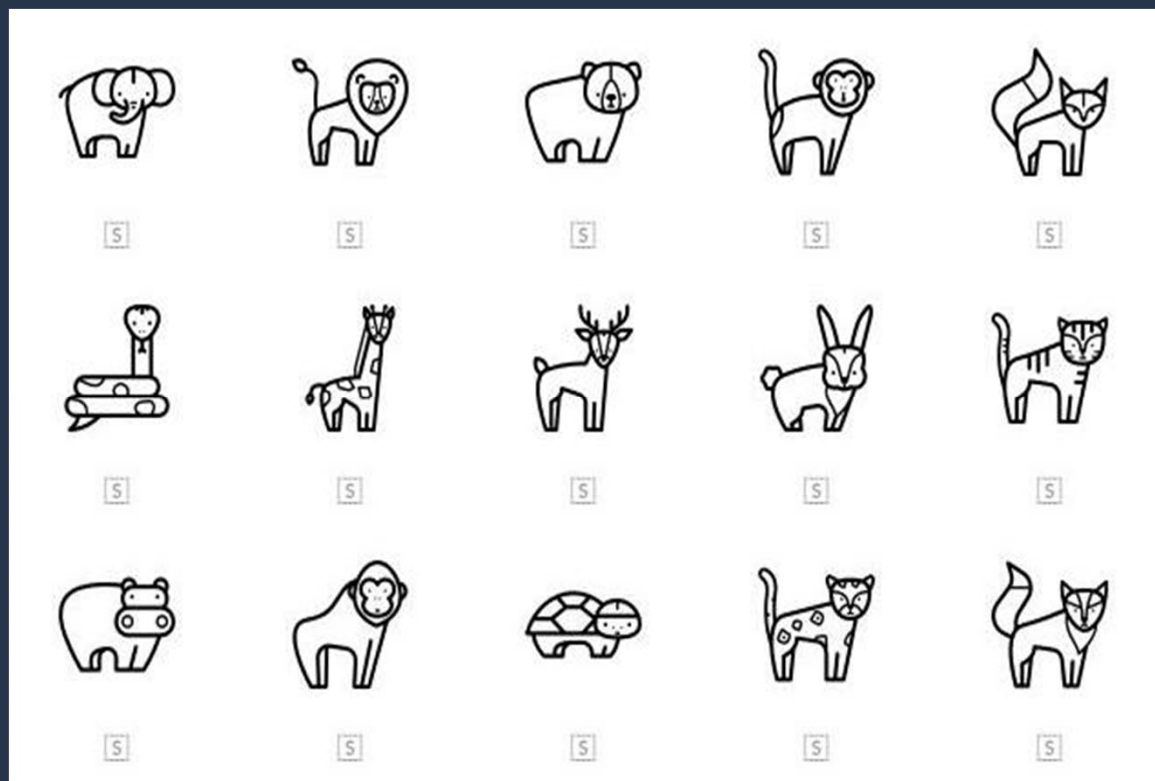


- Created to help dyslexic readers.
- Heavy weighted bottoms to help reinforce the line of text.
- Unique shapes of each letter can help prevent flipping and swapping

Source: <http://opendyslexic.org/>

Pictograms

- Black and white
- Simple design
- Free with attribution



designed by Freepik from Flaticon
<http://www.flaticon.com/packs/forest-animals>



Copy of RA Collections IFLA Project

File Edit View Insert Format Data Tools Add-ons Help All changes saved in Drive

Comments Share

31653003161584 31653003229332 31653003228151 31653003170098 31653003218616 31653003229282 31653003173597 31653003159000 31653003248472 31653003230124 31653003217816 31653003207577 31653003194254 31653003221982 31653003216743 31653003209854

31653003161600 31653003202172 31653003172185 31653003245908 31653003218681 31653003216776 31653003247656 31653003218814 31653003219499 31653003228128 31653003219184 31653003217998 31653003227146 31653003170411 31653003248308 31653003226734

31653003228698 31653003157566 31653003225918 31653003173134 31653003218574 31653003225900 31653003222394 31653003223236 31653003218012 31653003225850 31653003160206 31653003218004 31653003170353 31653003156576 31653003222642 31653003230868

31653003161543 31653003200861 31653003248456 31653003175097 31653003247730 31653003219051 31653003194528 31653003159026 31653003245197 31653003234688 31653003224697 31653003217840 31653003171054 316530031914745 31653003172730 31653003171047

31653003161709 31653003202156 31653003219580 31653003170965 31653003216842 31653003158986 31653003194494 31653003247235 31653003218855 31653003226411 31653003229936 31653003217907 31653003170783 31653003164851 31653003203717 31653003155487

31653003223988 31653003172870 31653003219044 31653003160768 31653003174736 31653003219739 31653003172136 31653003229274 31653003219614 31653003161675 31653003170106 31653003223749 31653003170916 31653003216685 31653003229324 31653003217899

31653003219069 31653003219101 31653003223178 31653003217576 31653003217725 31653003159059 31653003170775 31653003172888 31653003219150 31653003226627 31653003222212 31653003200358 31653003229969 31653003228425 31653003230223 31653003217832

31653003159091 31653003230025 31653003170346 31653003217584 31653003217717 31653003219473 31653003194510 31653003183406 31653003158978 31653003170189 31653003248555 31653003201521 31653003207148 31653003222469 31653003248589 31653003219713

31653003159075 31653003247698 31653003224473 31653003217600 31653003217709 31653003233615 31653003194320 31653003201349 31653003158911 31653003230538 31653003202230 31653003219721 31653003173456 31653003248514 31653003216800 31653003219036

31653003159083 31653003161576 31653003173555 31653003217618 31653003217691 31653003159117 31653003173662 31653003158960 31653003160024 31653003248886 31653003222287 31653003217667 31653003233771 31653003248530 31653003219135 31653003175162

31653003159109 31653003173464 31653003218830 31653003217634 31653003173472 31653003223087 31653003173746 31653003159570 31653003158929 31653003225835 31653003248688 31653003248878 31653003172946 31653003248522 31653002733433 31653003217642

31653003157582 31653003216719 31653003172789 31653003217592 31653003173498 31653003219465 31653003172193 31653003217477 31653003175113 31653003223368 31653003160149 31653003200317 31653003172862 31653003219119 31653003217360

31653003235933 31653003217980 31653003218699 31653003200754 31653003247862 31653003219606 31653003222402 31653003217469 31653003223426 31653003160198 31653003207221 31653002701497 31653003194395 31653003217352

31653003170197 31653003157590 31653003217766 31653003160776 31653003217519 31653003222436 31653003230355 31653003194411 31653003173738 31653003172201 31653003200341 31653003207635 31653003172672 31653003217675

31653003247268 31653003194429 31653003217741 31653003159505 31653003217485 31653003230496 31653003228813 31653003194403 31653003243838 31653003160198 31653003200275 31653003172045 31653003230363 31653003217659

31653003217949 31653003217733 31653003170387 31653003217501 31653003219457 31653003170304 31653003228367 31653003219192 31653003200325 31653003170221 31653003194270 31653003154613

31653003226213 31653003217758 31653003216727 31653003217493 31653003159158 31653003170296 31653003194346 31653003200333 31653003170213 31653003194288 31653003203899

+ BINS NF Easy JUV Oversize Nancy Drew?/Reference? Oversize bottom Shelf Spinners book display?

#ALAMW17



ALA ATLANTA MIDWINTER MEETING & EXHIBITS January 20-24, 2017

b17574948

Author Arlon, Penelope, author.
Title Birds / by Penelope Arlon and Tory Gordon-Harris.
Call No. NF JUV 598 A753
Locations r



Summary

Record i1801737x

Item-Level Holds 0

Bib-Level Holds 0

Record

Checked out on 01-06-2017 10:32 to [REDACTED] due on 01-13-2017

i1801737x Last Updated: 01-06-2017 Created: 11-15-2014 Revisions: 6

Copy No.	1	Last Checkin	02-19-2016	Last Checkout Date	02-12-2016 11:41AM
Item Code 1	0	Inventory Date	- -	Location	rnf Roberts Academy - Non-Fiction
Item Code 2	- ---	Checkin Location	200	Loanrule	24
Item Type	38 Roberts Academy Children's Book	No. of Renewals	0	Status	- DUE 01-13-2017
Price	\$10.00	No. of Overdues	0	Internal Use	0
Checkout Date	01-06-2017 10:32AM	Overdue Date	- -	Copy Use	0
Checkout Location	200	Item Use 3	0	Item Message	- No Message
Due Date	01-13-2017	Recall Date	- -	OPAC Message	- ---
Patron No.	1003081	Total Checkouts	2	Year-to-Date Circ	2
Last Patron	1004140	Total Renewals	0	Last Year Circ	0

Barcode 31653003229282

Internal Note Birds bin

#ALAMW17

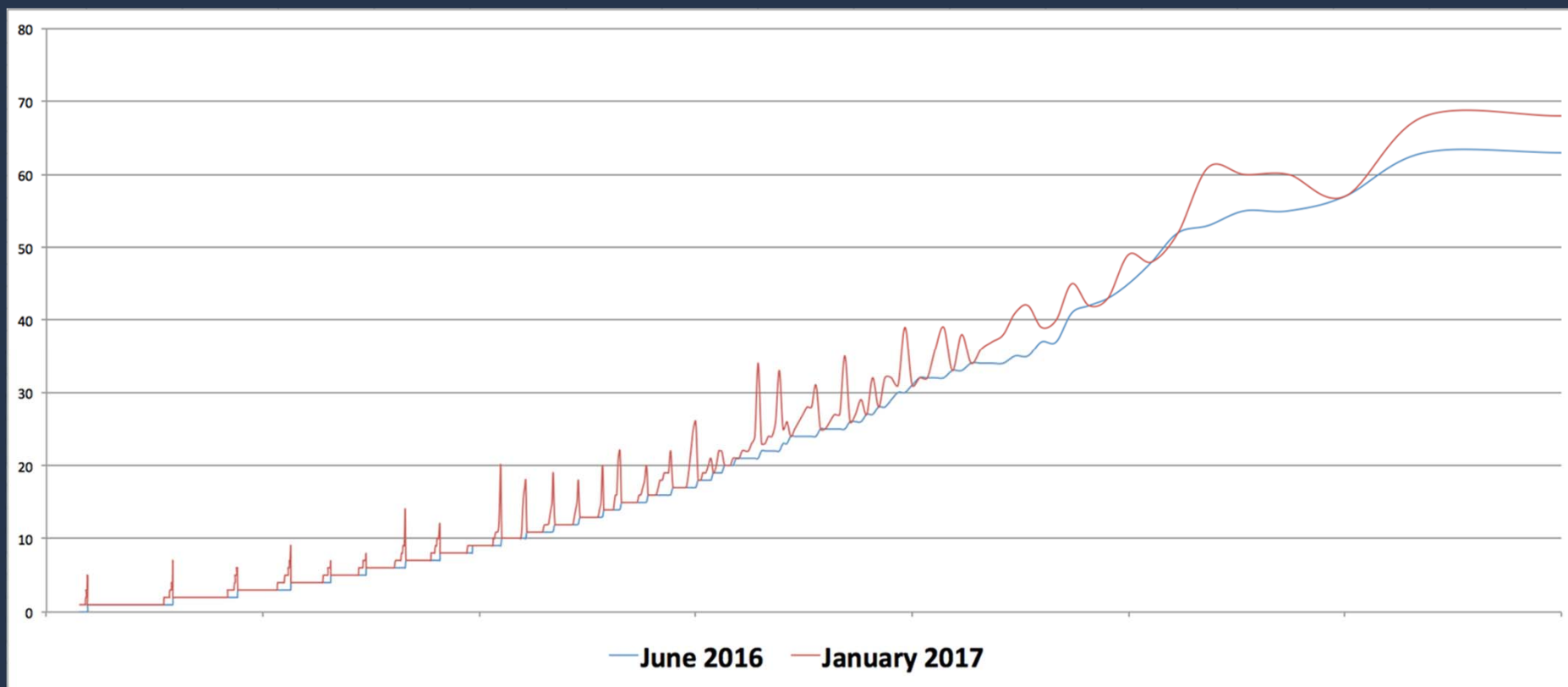
Circulation Stats

Title	Record Number	Date Created	Total Checkouts Jun. 2016	Total Checkouts Jan. 2017	Last Checkout Date
Shark attack!	b17744751	07-30-2015	14	21	12-09-2016
The twelve days of Christmas / [illustrated by Jade Fang].	b14947274	07-20-2013	7	8	12-16-2016
Scholastic 2016 book of world records	b17942561	07-11-2016	-	10	12-16-2016
Star Wars : the original trilogy stories	b17903919	06-29-2016	-	14	12-09-2016



**ALA ATLANTA
MIDWINTER
MEETING & EXHIBITS**
January 20-24, 2017

Total Checkouts

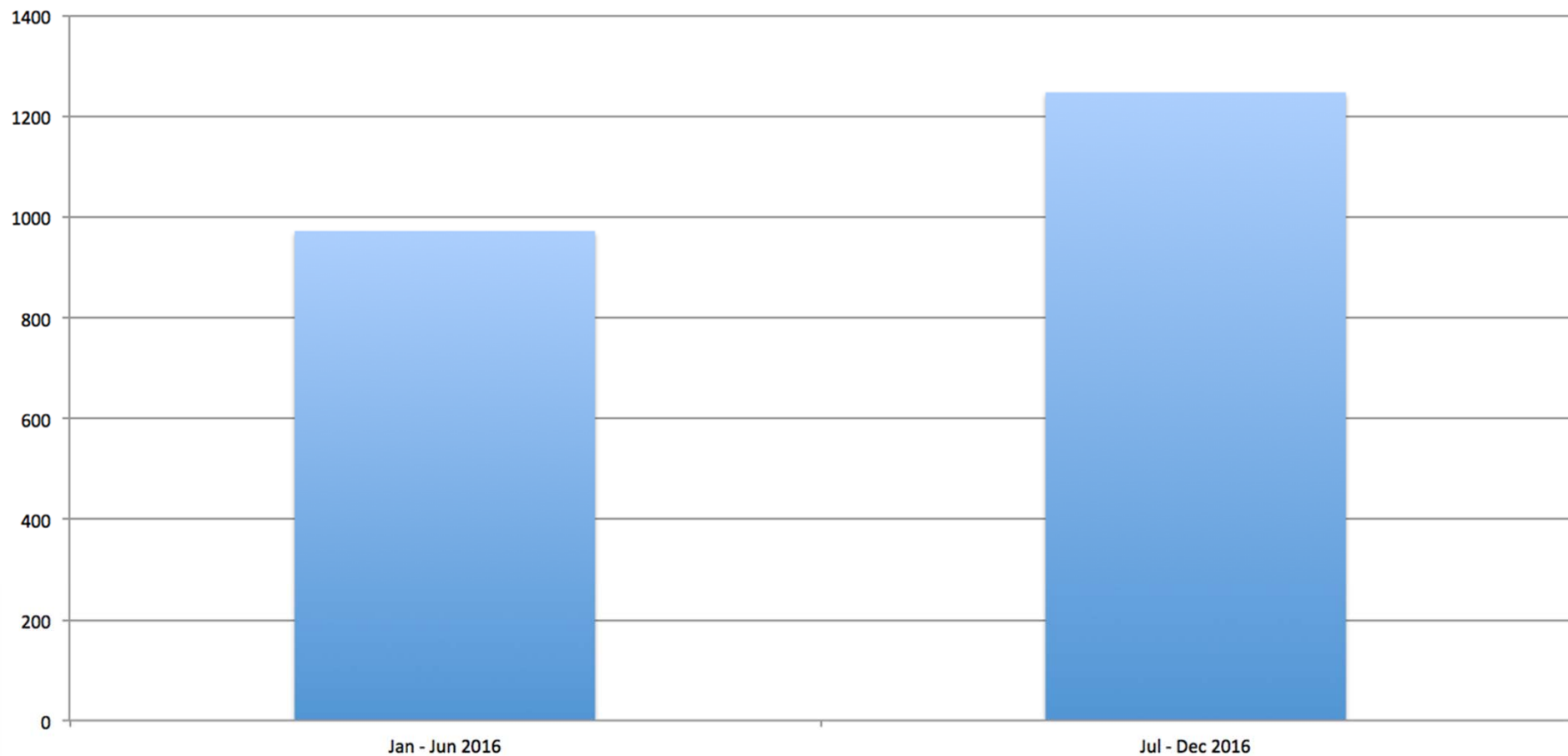


#ALAMW17



ALA ATLANTA
MIDWINTER
MEETING & EXHIBITS
January 20-24, 2017

Number of checkouts (28% Increase)



#ALAMW17



ALA ATLANTA
MIDWINTER
MEETING & EXHIBITS
January 20-24, 2017

After the Project



#ALAMW17

“Give my child a hunger for reading
That is what I ask for with a burning heart
Because I would really like
That my child will have the key in his hand
To adventureland
Where the sweetest joys of all are available”

Astrid Lindgren

Quote taken from the first page of the IFLA report

Source: http://www.ifla.org/files/assets/lsn/publications/guidelines-for-library-services-to-persons-with-dyslexia_2014.pdf



ALA ATLANTA
MIDWINTER
MEETING & EXHIBITS
January 20–24, 2017

Thank you

mmorgan@flsouthern.edu

#ALAMW17