



# Digitizing the Keith/Albee Collection

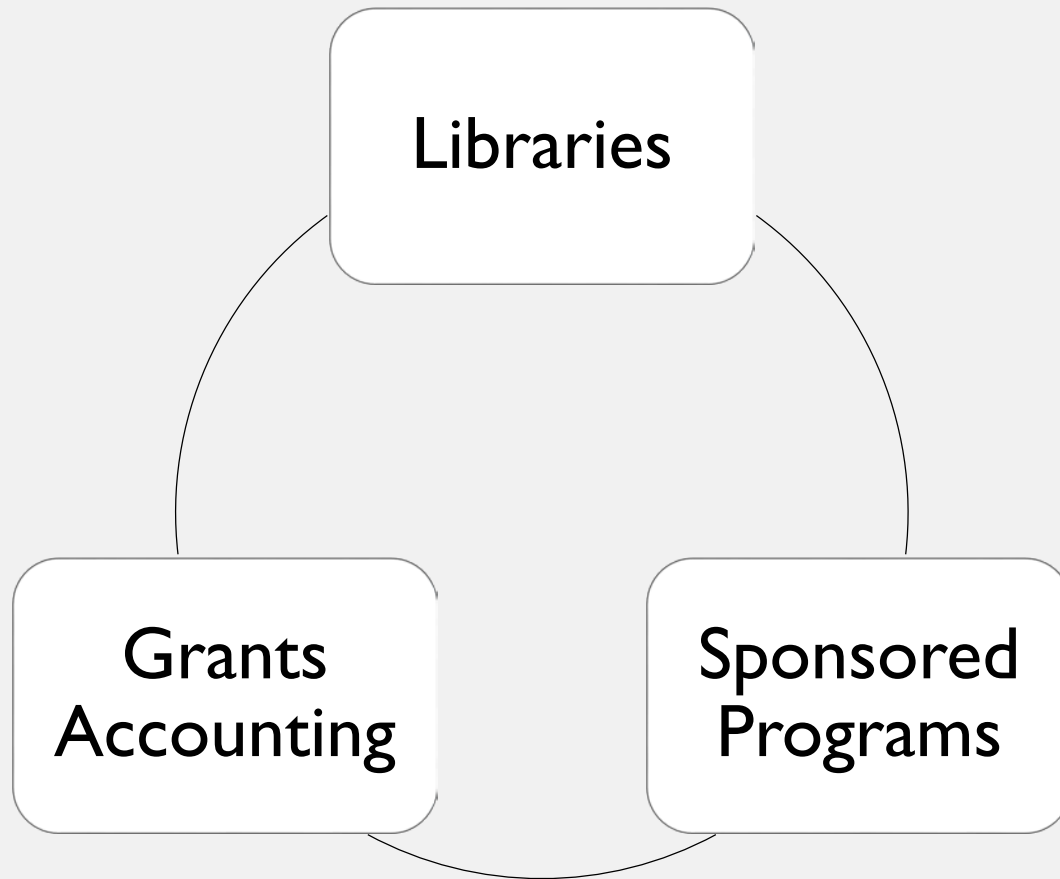
## #ThanksNEH

Bethany Davis, University of Iowa Libraries  
ACRL DSS Digital Collections Discussion Group  
June 23, 2018



# Outline

- Keith/Albee Collection
- Project Planning & Grant Writing
- Project Implementation
- Plans vs. Reality





NICKEL  
BIJOU  
JAN 4 1906  
IN THE  
THEATRE

PAWT  
BLOOD  
STAR  
AUG. 3 1918  
TO  
Keith/Albee Collection  
MSC 356  
Scrapbook  
124

PAWT  
BLOOD  
STAR  
AUG. 8 1906  
MAR  
Keith/Albee Collection  
MSC 356  
Scrapbook

PAWT  
BLOOD  
STAR  
Mar. 15 '09  
TO  
Keith/Albee Collection  
MSC 356  
Scrapbook

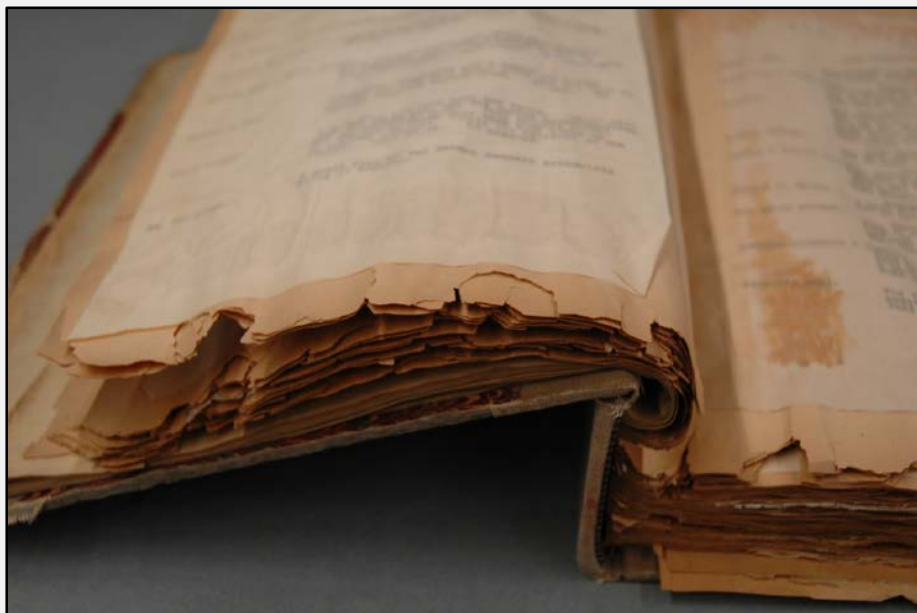
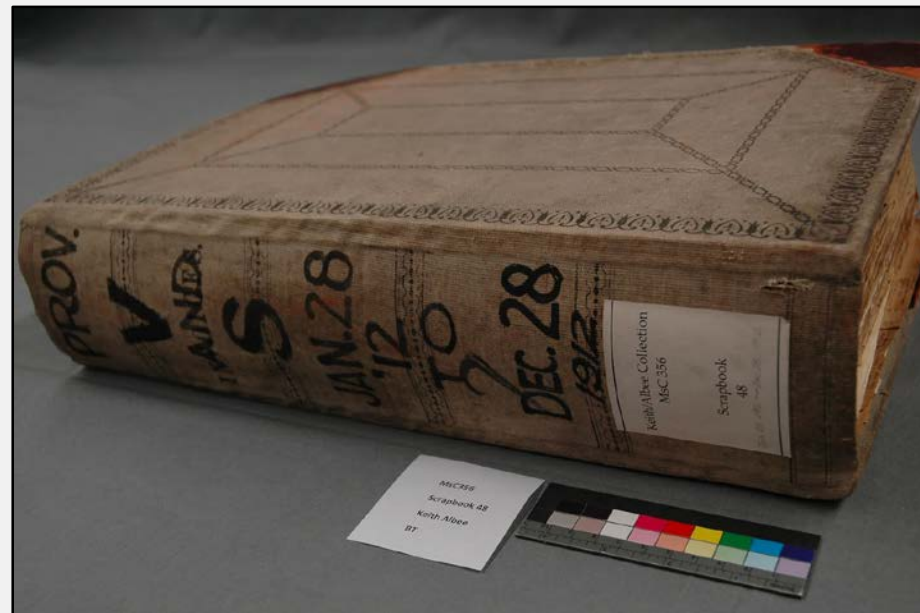
PAWT  
BLOOD  
STAR  
SEPT. 12 '12  
TO  
Keith/Albee Collection  
MSC 356

BIJOU  
STAR  
AUG. 3 1918  
TO  
Keith/Albee Collection  
MSC 356  
Scrapbook  
130

LOCAL  
PLAYS  
INVOICE  
2  
Keith/Albee Collection  
MSC 356  
Scrapbook

LOCAL  
PLAYS  
3  
Keith/Albee Collection  
MSC 356  
Scrapbook  
134







## Project Planning & Grant Writing

Call for proposals	April 2013
Collection survey	May 2013
Writing & revising	June-July 2013
Internal UI deadline	July 11, 2013
NEH deadline	July 18, 2013



<b><u>Brittleness:</u></b>	<b><u>Percentage of Scrapbooks:</u></b>
<b>Category 1</b> (Paper is brittle and inflexible. Pages are breaking completely away from spine or have extensive damage or loss throughout book. Most pages have edge breaks and corners missing, darkening of substrate. Loose or damaged clippings and ephemera. Bindings suffering damage or abrasions. Very fragile. Restriction of use recommended.)	<b>22%</b>
<b>Category 2</b> (Paper is brittle and inflexible. Some pages broken from spine at front and back sections, although pages in the center remain intact. Many pages have edge tears, and there are missing pieces on edges or corners throughout. Loose or damaged clippings and ephemera. Bindings suffering damage or abrasions. Limit use.)	<b>11%</b>



---

<b>Treatment Proposal</b>	Stabilize for imaging. Surface clean with soft brushes and sponges where appropriate to remove surface grime and debris. Clean out debris. Remove loose pages at back and house separately in folders. Interleaving as needed. Humidify and mend loose and damaged clippings as needed. Create new substrates for loose clippings when appropriate, or house loose pages in folders for support. Consider hand application of alkalization as needed. Consolidate cloth binding and leather corners. Mend corners and spine. Consolidate spine and reline where possible.
---------------------------	---------------------------------------------------------------------------------------------------------------------------------------------------------------------------------------------------------------------------------------------------------------------------------------------------------------------------------------------------------------------------------------------------------------------------------------------------------------------------------------------------------------------------------------------------------------------------

<b>Housing Proposal</b>	Custom drop spine box for scrapbook and folders with loose pages.
-------------------------	-------------------------------------------------------------------

**Estimated Hours**

Examination, Documentation, and Treatment	25
Housing or Mounting	10
Total Treatment Hours	35

---





## Project Implementation

Award notification	March 2014
Project start	May 2014
Project end	April 2017
Project extended to	December 2017



Thank you!

Bethany Davis, University of Iowa Libraries

[bethany-davis@uiowa.edu](mailto:bethany-davis@uiowa.edu)